

# QUEBEC PRECIOUS METALS

CORPORATION

TSX.V: QPM

Gold Explorer in the James Bay Region, Quebec

Trading Symbol in Canada	TSX: QPM
Shares issued and outstanding	67 M
Warrants	5.6 M
Market capitalization	\$20 million
Closing Price	\$0.30
<i>(January 6, 2020)</i>	
Newmont Corporation	15.6%
Quebec institutions	12.9%
Management, Board, PE Partners	8.7%

## Sakami Gold Project

- Many gold occurrences identified over 10-KM STRIKE LENGTH
- 23 km along the contact between sediments and the volcanics between LA GRANDE AND OPINACA geological sub-provinces
- YEAR ROUND ACCESS for drilling with 2 drills on-site and 3 camps
- Underexplored area hosting the ÉLÉONORE GOLD MINE along strike

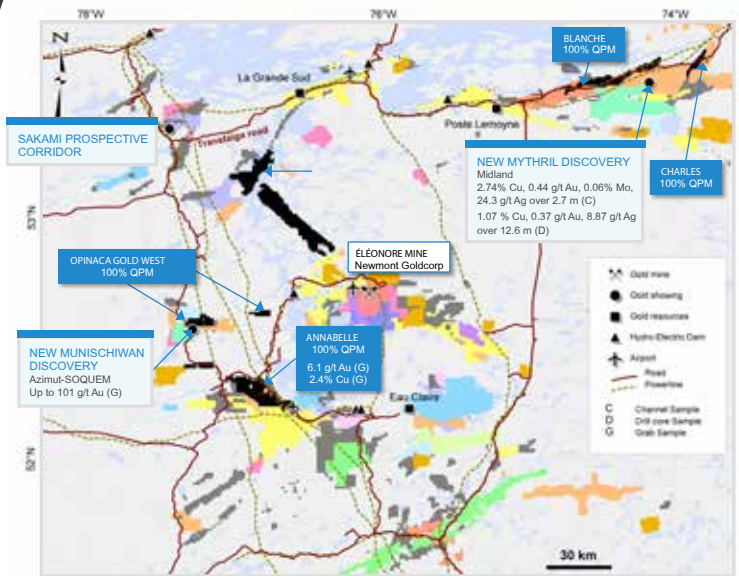
### LA POINTE DEPOSIT HIGHLIGHTS

- 100 diamond drill holes intercepted the deposit
- 32,940 m drilled to date
- Drilling over 900 m length, down-plunge from surface to 600 m, open in all directions
- Significant gold grades between 20 to 50 m drilling width

### DRILL RESULTS FROM LA POINTE

4.94 g/t Au over 21 m including 6.35 g/t Au over 11 m
4.01 g/t Au over 23 m including 7.21 g/t Au over 7.0 m
4.16 g/t Au over 21 m including 6.40 g/t Au over 13 m
2.51 g/t Au over 48 m incl. 6.93 g/t Au over 12 m
3.89 g/t Au over 14.9 m incl. 4.26 g/t Au over 11.9 m
3.22 g/t Au over 31.5 m incl. 5.11 g/t Au over 15.0 m
3.59 g/t Au over 27.0 m incl. 5.06 g/t Au over 15.0 m

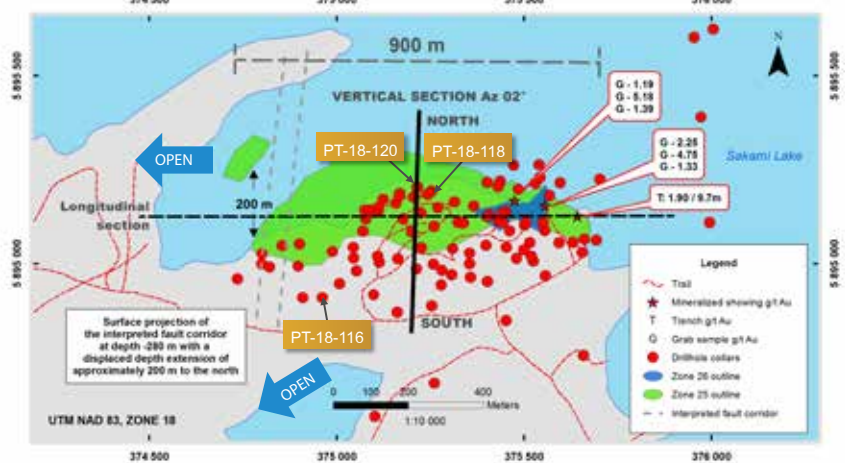
[www.qpmcorp.ca](http://www.qpmcorp.ca)



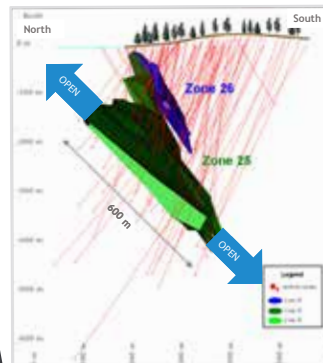
■ QPM Highly prospective land package (874 km<sup>2</sup>)



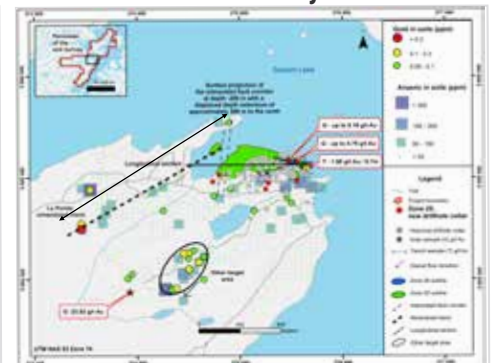
La Pointe Deposit - Plan View



Vertical section



Gold Soil Anomaly Trend



# QUEBEC PRECIOUS METALS

CORPORATION

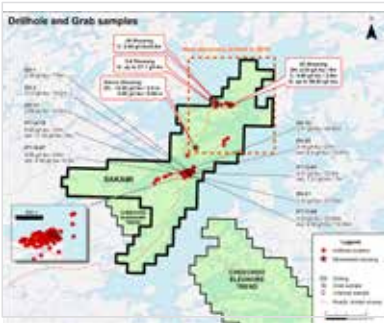
TSX.V: QPM

Gold Explorer in the James Bay Region, Quebec



## Sakami

Simon & JR discoveries - up to 8 km NE of La Pointe deposit



### 2019 Gold Discovery of JR & Simon Zone

#### DRILLING HIGHLIGHTS

3.68 g/t Au over 2.07 m
14.20 g/t Au over 2 m
5.05 g/t Au over 5.06 m
4.66 g/t Au over 3.50 m
1.27 g/t Au over 15.27 m

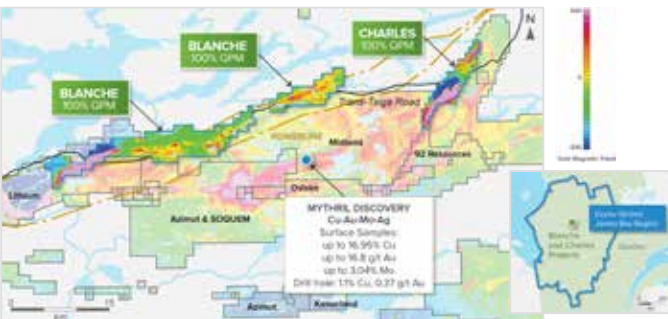
## Contact Information

**Normand Champigny**  
Chief Executive Officer  
514 979-4746  
nchampigny@qpmcorp.ca

**Jean-François Meilleur**  
President  
514 951-2730  
jfmeilleur@qpmcorp.ca

[www.qpmcorp.ca](http://www.qpmcorp.ca)

## Charles & Blanche



### LOCATION AND INFRASTRUCTURE

- 150 km northeast of the Éléonore gold mine.
- Close to a power line.

**Total of 162 km<sup>2</sup> – 100% owned with no royalties.**

- Blanche 256 claims – 131 km<sup>2</sup>
- Charles 61 claims – 31 km<sup>2</sup>

### WORK TO DATE

#### Blanche

Prospecting and selected grab sampling completed in 2017. A total of 221 samples were collected and values up to 0.31% copper were measured.

#### Charles

Compilation of historical exploration work. Linear magnetic highs identified.

The geological setting (greenstone belt) appears to be favourable for the discovery of base metals and gold. The projects are located within 7 km to the north where Midland Exploration Inc. (MD TSX-V) has discovered a significant copper-gold mineralized zone on its Myhril project. BHP Billiton Canada Inc. has recently made an investment of \$5.9 M in Midland to fund drilling of the Myhril discovery.

## Annabelle



### LOCATION AND INFRASTRUCTURE

- 60 km southwest of the Éléonore mine and close to the mine's road.
- Close to a power line.
- Total of 186 km<sup>2</sup> – 353 claims, 100% owned with no royalties.

### WORK TO DATE

Prospecting and selected grab sampling were completed in 2017. A total of 274 samples were collected and values up to 6.1 g/t Au and 2.4% Cu were measured.

## Opinaca Gold West



### LOCATION AND INFRASTRUCTURE

- 40 km west of the Éléonore mine.
- Road access and power line.
- Total of 74 km<sup>2</sup> – 141 claims, 100% owned with a 2% Net Smelter Royalty

### New Discovery by Azimut Exploration & SOQUEM

Opinaca Gold West is adjacent to the Azimut Exploration Inc. and SOQUEM's discovery of a significant gold mineralization zone on their Munischiwan project 500 m from site.