

QUEBEC PRECIOUS METALS

CORPORATION

TSX.V: CJC

Gold Explorer in the James Bay Region, Quebec

Trading Symbol in Canada	TSX: CJC
Shares issued and outstanding	45 M
Warrants	4.9 M
Market capitalization	\$14 million
Closing Price	\$0.35
<i>(September 5, 2019)</i>	
Newmont Goldcorp Corporation	14%
Quebec institutions	13%
Management, Board, PE Partners	11%

Sakami Gold Project

- Many gold occurrences identified over 10-KM STRIKE LENGTH
- 23 km along the contact between sediments and the volcanics between LA GRANDE AND OPINACA geological sub-provinces
- YEAR ROUND ACCESS for drilling with 2 drills on-site and 3 camps
- Underexplored area hosting the ÉLÉONORE GOLD MINE along strike

LA POINTE DEPOSIT HIGHLIGHTS

- 100 diamond drill holes intercepted the deposit
- 32,940 m drilled to date
- Drilling over 900 m length, down-plunge from surface to 600 m, open in all directions
- Significant gold grades between 20 to 50 m drilling width

DRILL RESULTS FROM LA POINTE

4.94 g/t Au over 21 m including 6.35 g/t Au over 11 m

4.01 g/t Au over 23 m including 7.21 g/t Au over 7.0 m

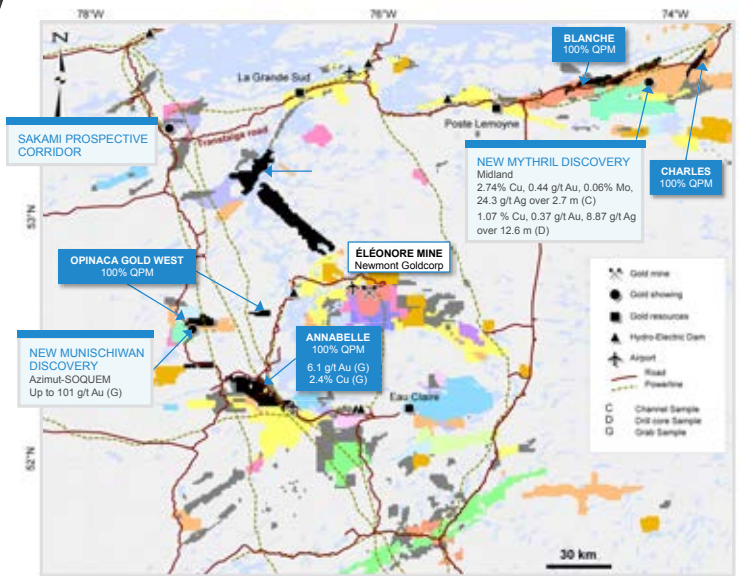
4.16 g/t Au over 21 m including 6.40 g/t Au over 13 m

2.51 g/t Au over 48 m incl. 6.93 g/t Au over 12 m

3.89 g/t Au over 14.9 m incl. 4.26 g/t Au over 11.9 m

3.22 g/t Au over 31.5 m incl. 5.11 g/t Au over 15.0 m

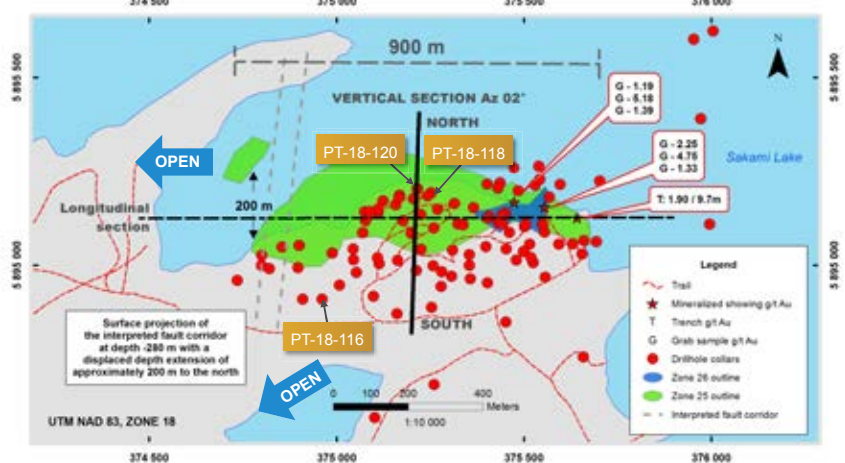
3.59 g/t Au over 27.0 m incl. 5.06 g/t Au over 15.0 m



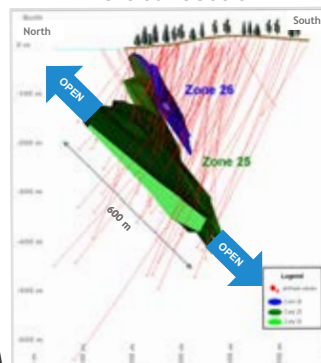
■ QPM Highly prospective land package (874 km²)



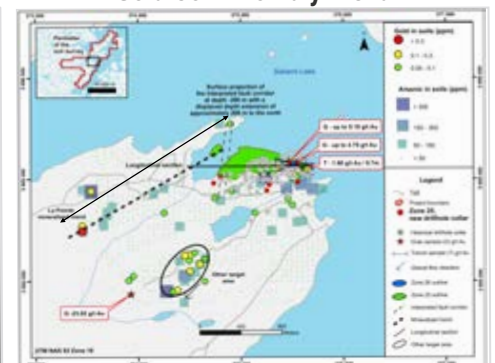
La Pointe Deposit - Plan View



Vertical section



Gold Soil Anomaly Trend



QUEBEC PRECIOUS METALS

CORPORATION

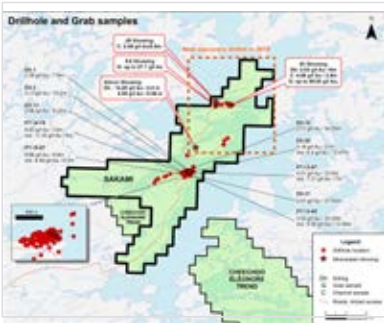
TSX.V: CJC

Gold Explorer in the James Bay Region, Quebec



Sakami

Simon & JR discoveries - up to 8 km NE of La Pointe deposit



2019 Gold Discovery of JR & Simon Zone

DRILLING HIGHLIGHTS

3.68 g/t Au over 2.07 m
14.20 g/t Au over 2 m
5.05 g/t Au over 5.06 m
4.66 g/t Au over 3.50 m
1.27 g/t Au over 15.27 m

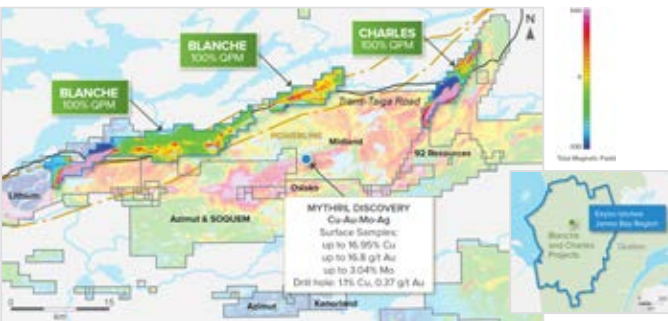
Contact Information

Normand Champigny
Chief Executive Officer
514 979-4746
nchampigny@qpmcorp.ca

Jean-François Meilleur
President
514 951-2730
jfmeilleur@qpmcorp.ca

www.qpmcorp.ca

Charles & Blanche



The geological setting (greenstone belt) appears to be favourable for the discovery of base metals and gold. The projects are located within 7 km to the north where Midland Exploration Inc. (MD TSX-V) has discovered a significant copper-gold mineralized zone on its Mythril project. BHP Billiton Canada Inc. has recently made an investment of \$5.9 M in Midland to fund drilling of the Mythril discovery.

LOCATION AND INFRASTRUCTURE

- 150 km northeast of the Éléonore gold mine.
- Close to a power line.

Total of 162 km² – 100% owned with no royalties.

- Blanche 256 claims – 131 km²
- Charles 61 claims – 31 km²

WORK TO DATE

Blanche

Prospecting and selected grab sampling completed in 2017. A total of 221 samples were collected and values up to 0.31% copper were measured.

Charles

Compilation of historical exploration work. Linear magnetic highs identified.

Annabelle



LOCATION AND INFRASTRUCTURE

- 60 km southwest of the Éléonore mine and close to the mine's road.
- Close to a power line.
- Total of 186 km² – 353 claims, 100% owned with no royalties.

WORK TO DATE

Prospecting and selected grab sampling were completed in 2017. A total of 274 samples were collected and values up to 6.1 g/t Au and 2.4% Cu were measured.

Opinaca Gold West



LOCATION AND INFRASTRUCTURE

- 40 km west of the Éléonore mine.
- Road access and power line.
- Total of 74 km² – 141 claims, 100% owned with a 2% Net Smelter Royalty

New Discovery by Azimut Exploration & SOQUEM

Opinaca Gold West is adjacent to the Azimut Exploration Inc. and SOQUEM's discovery of a significant gold mineralization zone on their Munischiwan project 500m from site.