



QUEBEC PRECIOUS METALS
CORPORATION

GOLD EXPLORER
JAMES BAY REGION, QUÉBEC

TSX-V: CJC

CORPORATE PRESENTATION

July, 2019

Forward Looking Statements

This document contains forward-looking statements that reflect the company's current expectations regarding future events. To the extent that any statements in this document contain information that is not historical, the statements are essentially forward-looking and are often identified by words such as "anticipate", "expect", "estimate", "intend", "project", "plan" and "believe". Forward-looking statements involve risks, uncertainties, and other factors that could cause actual results to differ materially from those expressed or implied by such forward-looking statements. There are many factors that could cause such differences, particularly: volatility and sensitivity to market metal prices; impact of change in foreign currency exchange rates and interest rates; imprecision in reserve estimates; environmental risks including increased regulatory burdens; unexpected geological conditions; adverse mining conditions; changes in government regulations and policies, including laws and policies; failure to obtain the necessary permits and approvals from government authorities; and other development and operating risks.

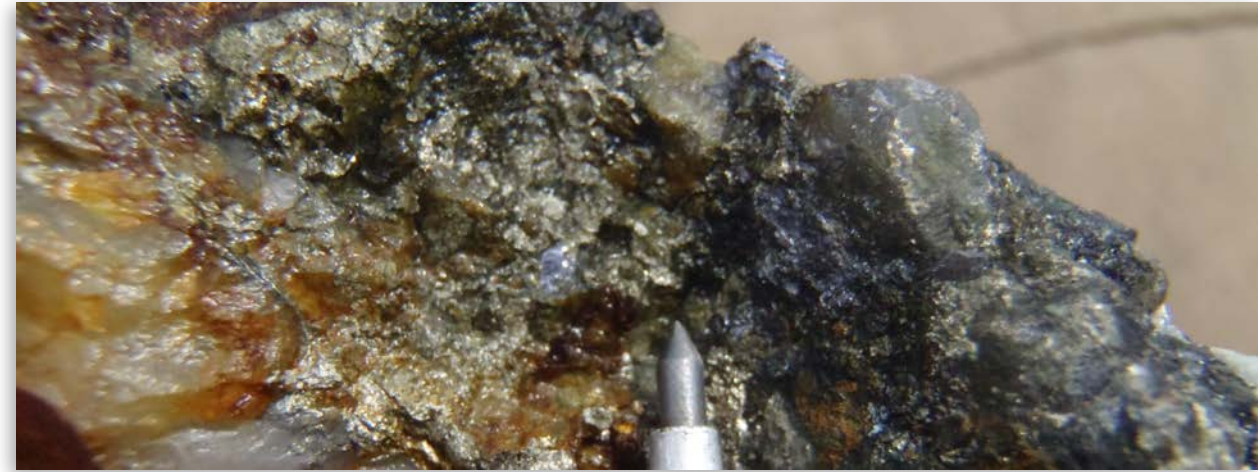
While the company believes that the assumptions underlying in the forward-looking statements are reasonable, undue reliance should not be placed on these statements, which only apply as of the date of this document. The company disclaims any intention or obligation to update or revise any forward- looking statement, whether or not it should be revised because of new information, future events or otherwise, unless required to do so by the applicable securities laws.

Qualified Persons

Normand Champigny, Ing., Chief Executive Officer, and Jean-Sébastien Lavallée, (OGQ #773), Vice-President Exploration, director and shareholder, both Qualified Persons under NI 43- 101 on standards of disclosure for mineral projects, have prepared and approved the technical content of this presentation.

Overview

- ▶ Creation of a **NEW GOLD EXPLORER** in the James Bay region of Quebec
- ▶ Gold consolidation strategy combining **GOLD ASSETS FROM THREE COMPANIES** listed on the TSX Venture
- ▶ **HIGHLY PROSPECTIVE LAND PACKAGE** (874 km²) located in new gold mining camp
- ▶ **FLAGSHIP PROJECT: SAKAMI** – ongoing drilling program, significant grades and well-defined drill-ready targets, to advance rapidly to the mineral resource estimate stage



- ▶ **STRATEGIC INVESTOR, NEWMONT GOLDCORP CORPORATION** (holds 14%), who operates the Éléonore gold mine, one of Quebec's largest gold mines, and located in the same mining district
- ▶ **PROVEN MANAGEMENT TEAM AND BOARD** with access to capital

Strong Shareholder Support

AS JULY 16, 2019

Closing price	\$0.32
Market cap	\$14 M
Approximate cash position	\$1.5 M
Shares outstanding	44,980,558
Options @ \$0.34 to 0.62	3,835,385
Warrants @ \$0.85 expiry 28/06/2020	4,481,004

KEY SHAREHOLDERS

Newmont Goldcorp Corporation	13.5%
<i>Caisse de dépôt et placement du Québec</i>	9.8%
<i>Management, Board</i>	5.9%
<i>PE Partners</i>	5.3%
<i>Investissement Québec</i>	3.1%



Proven Management Team and Board

MANAGEMENT

Normand Champigny

Chief Executive Officer

Jean-François Meilleur

President

Jean-Sébastien Lavallée

Vice President Exploration

Nathalie Laurin

Chief Financial Officer and
Corporate Secretary

BOARD OF DIRECTORS

INDEPENDENT

John W.W. Hick

Chairman*

Mario Caron, P. Eng.*

Dominique Dionne, B.A.A.

Charles B. Main, BCom*

NON-INDEPENDENT

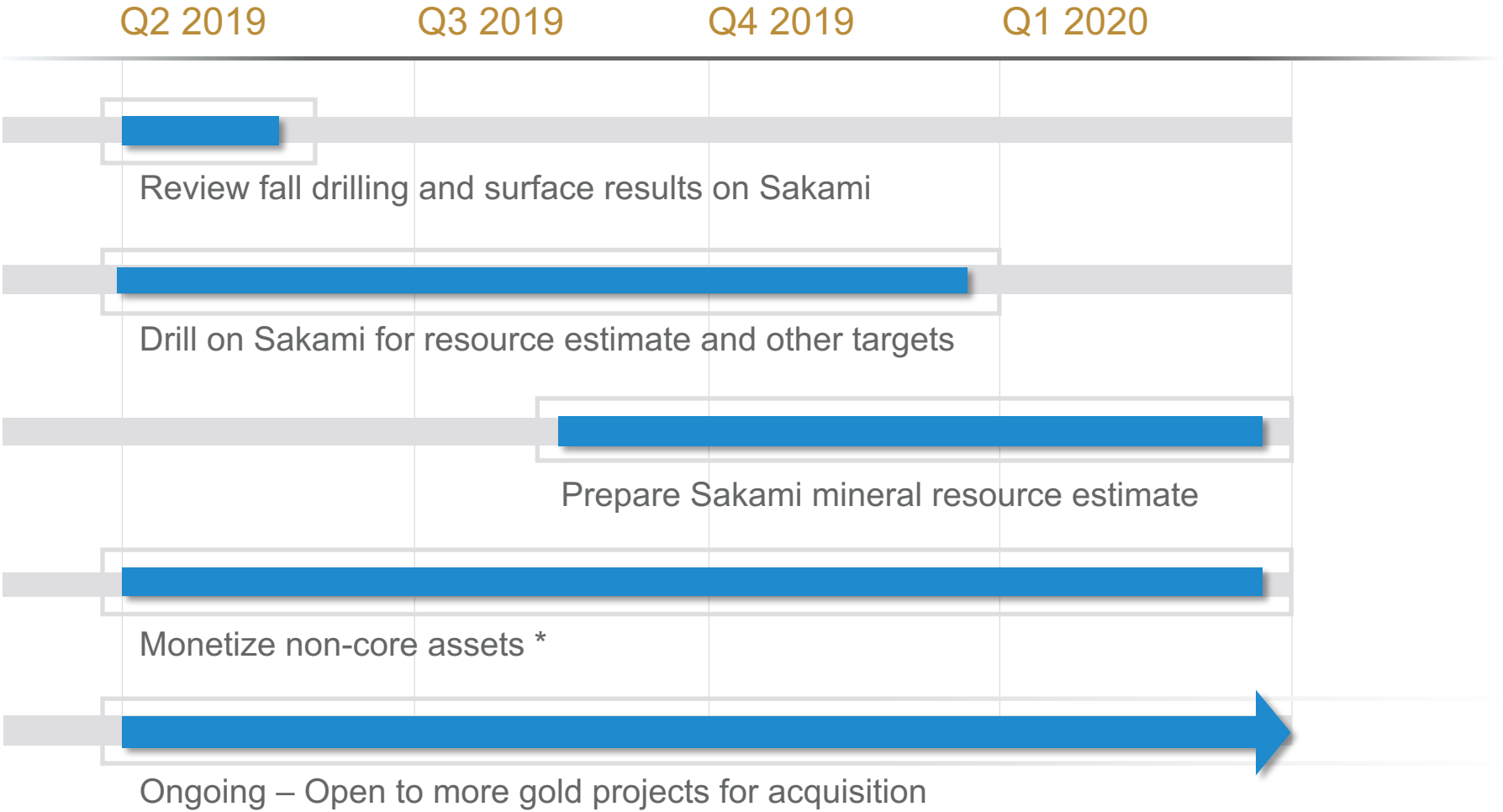
Normand Champigny, M.A.Sc., Eng.

Jean-François Meilleur, B.A.A.

Jean-Sébastien Lavallée, B.Sc., géo.

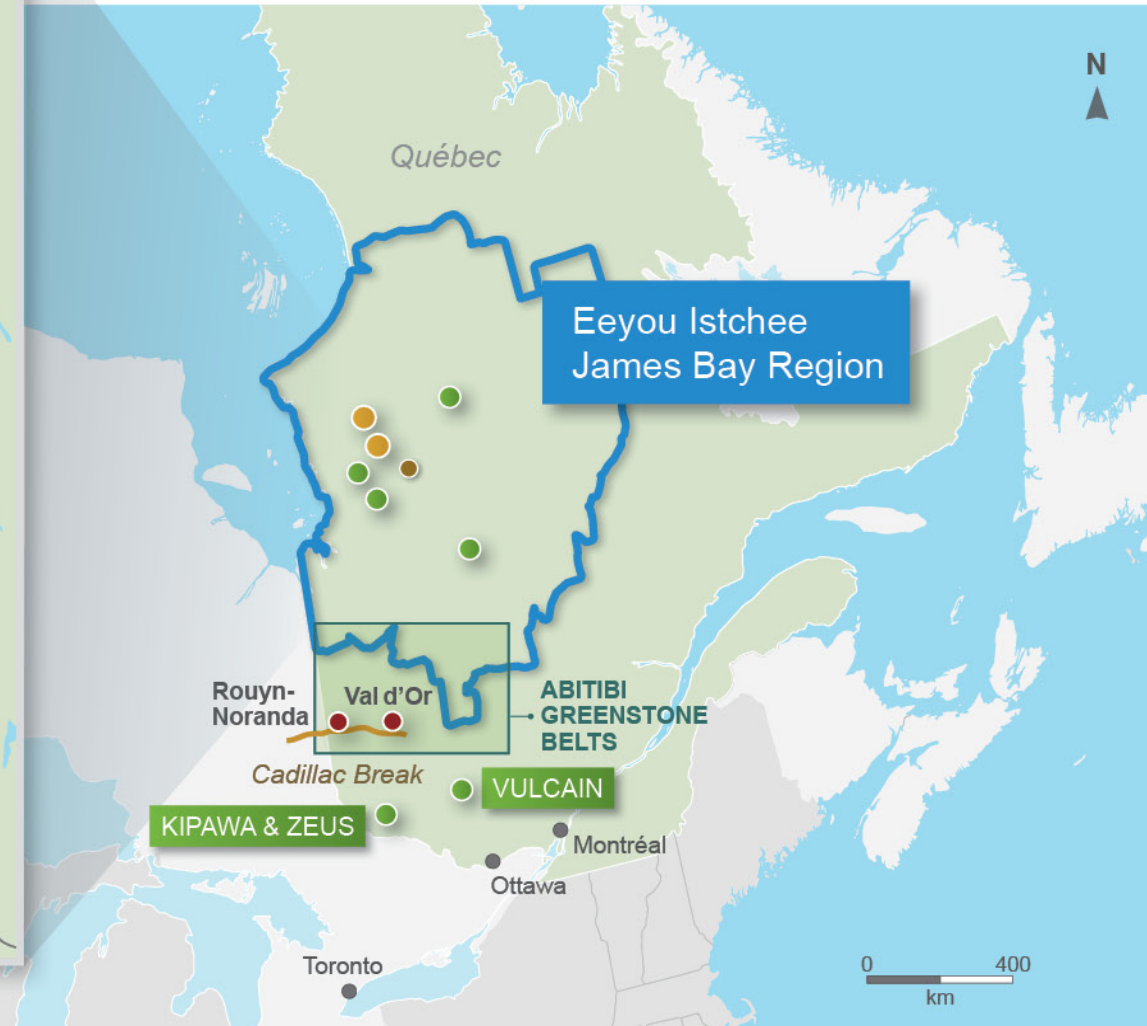
* Committee Chairman

Focused Operation Plan (12 months)



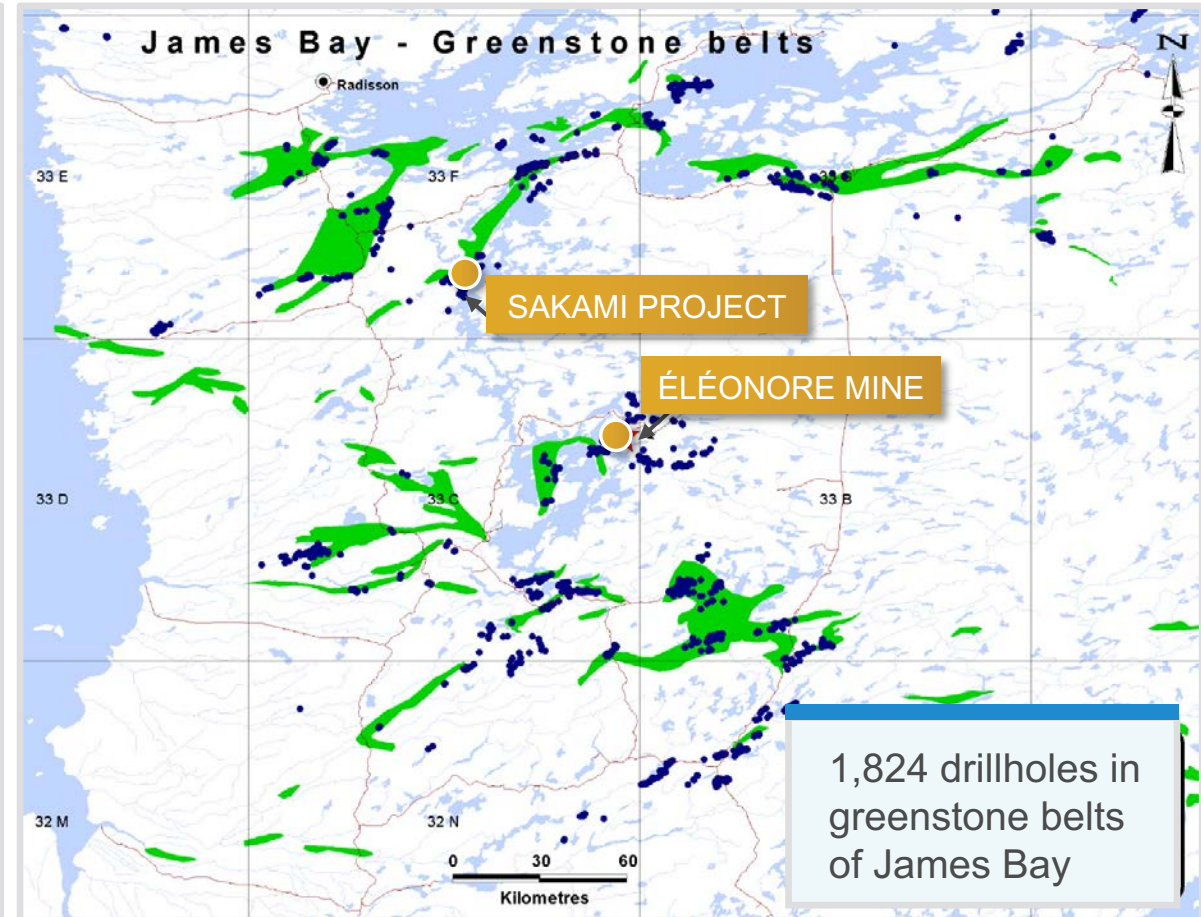
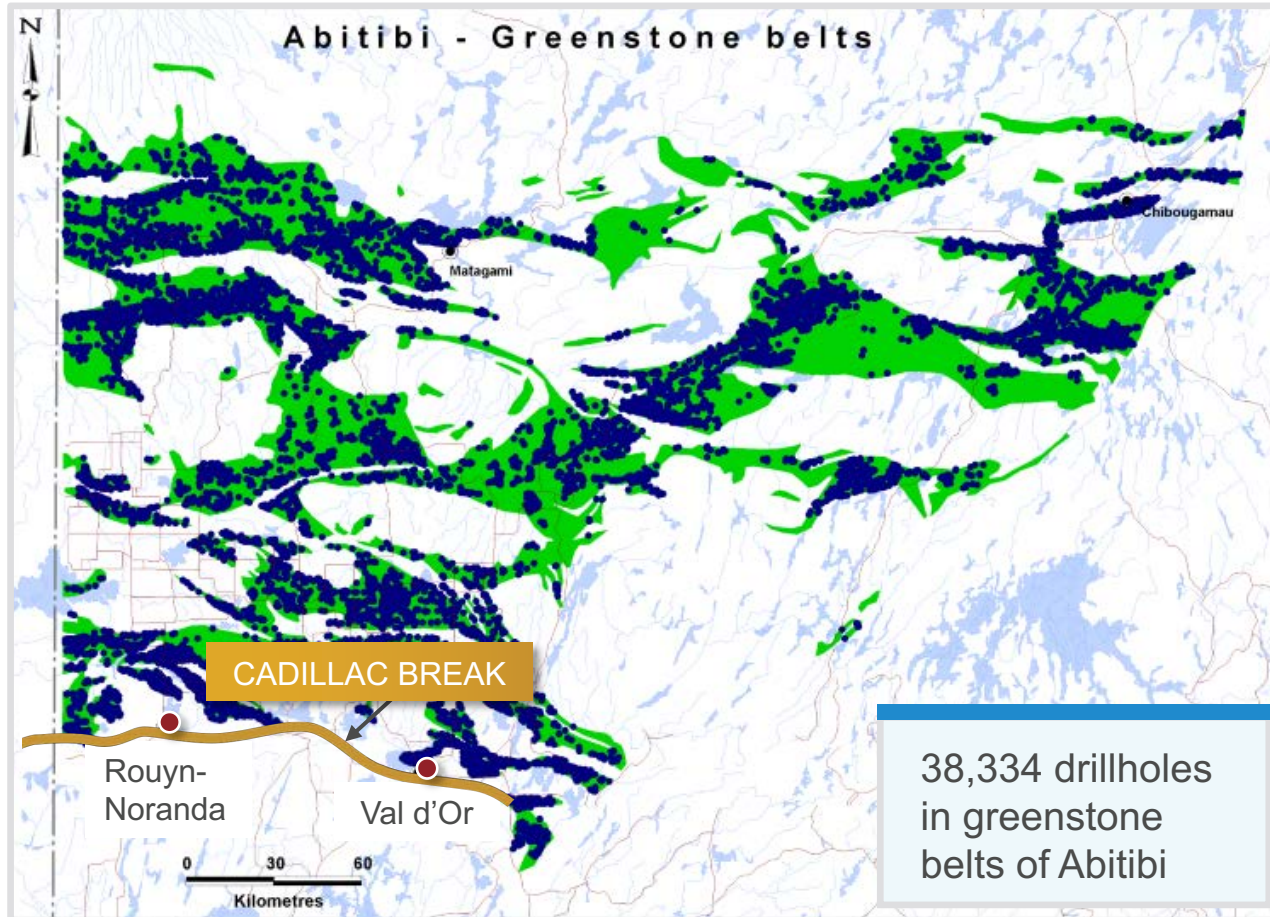
* Including a rare earth elements project with a feasibility study. More details in addendum.

James Bay Region - Sakami Project and Éléonore Mine



James Bay Region - Comparable To Abitibi Gold Mining Camp

WELL-DEVELOPED INFRASTRUCTURE • ACCESS TO HYDROPOWER • PROXIMITY TO THE ÉLÉONORE MINE
• ENGAGEMENT WITH LOCAL CREE COMMUNITIES



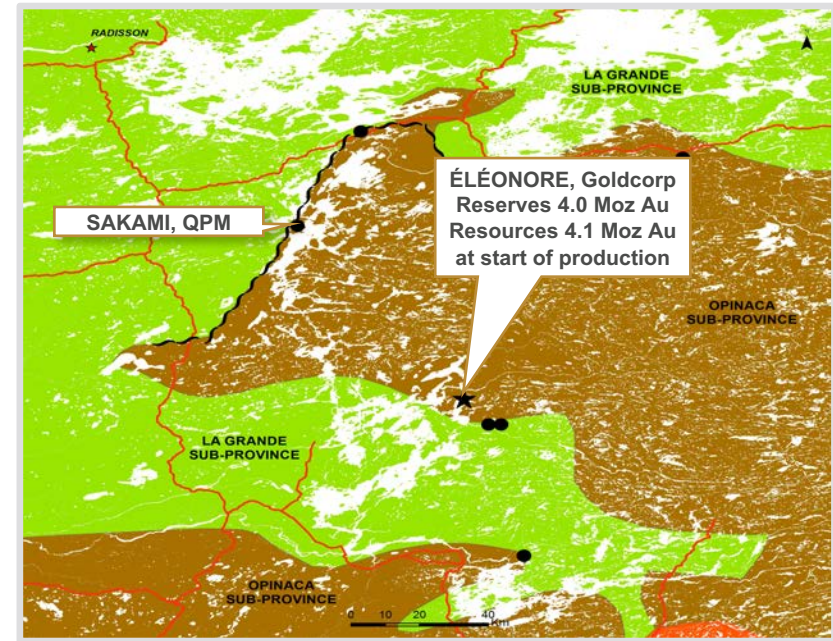
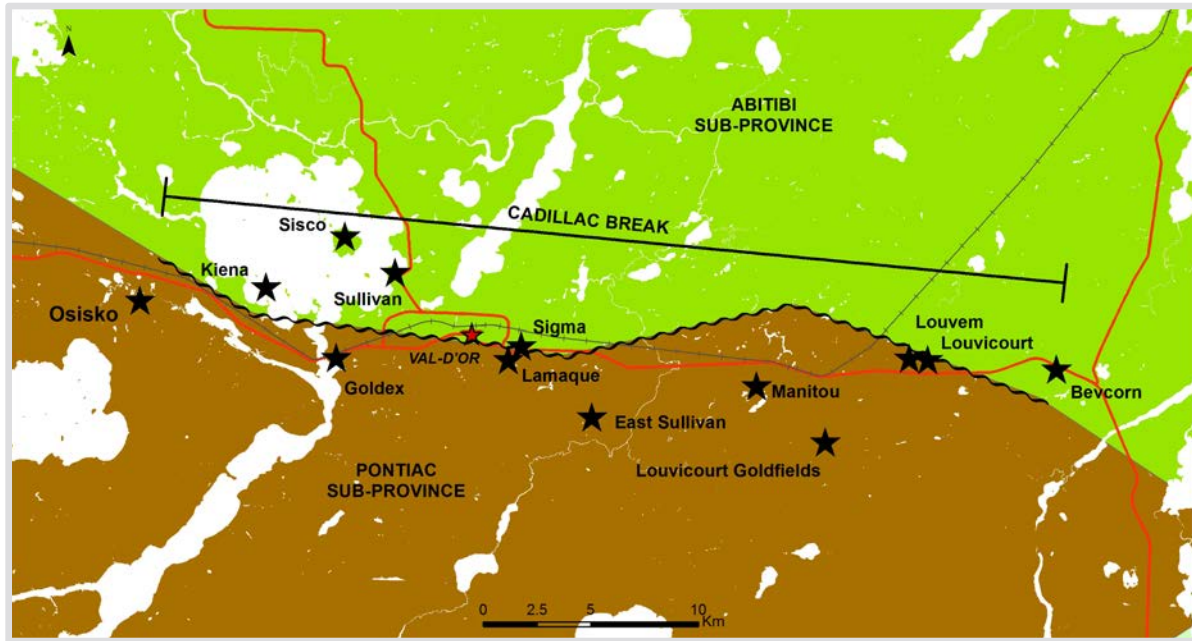
James Bay Region District-Scale Land Package

▸ Abitibi:

- +70 Moz of gold
- 91 years
- 100-km long belt

▸ James Bay:

- +10 Moz production/resources of gold
- 14 years
- 150-km long belt

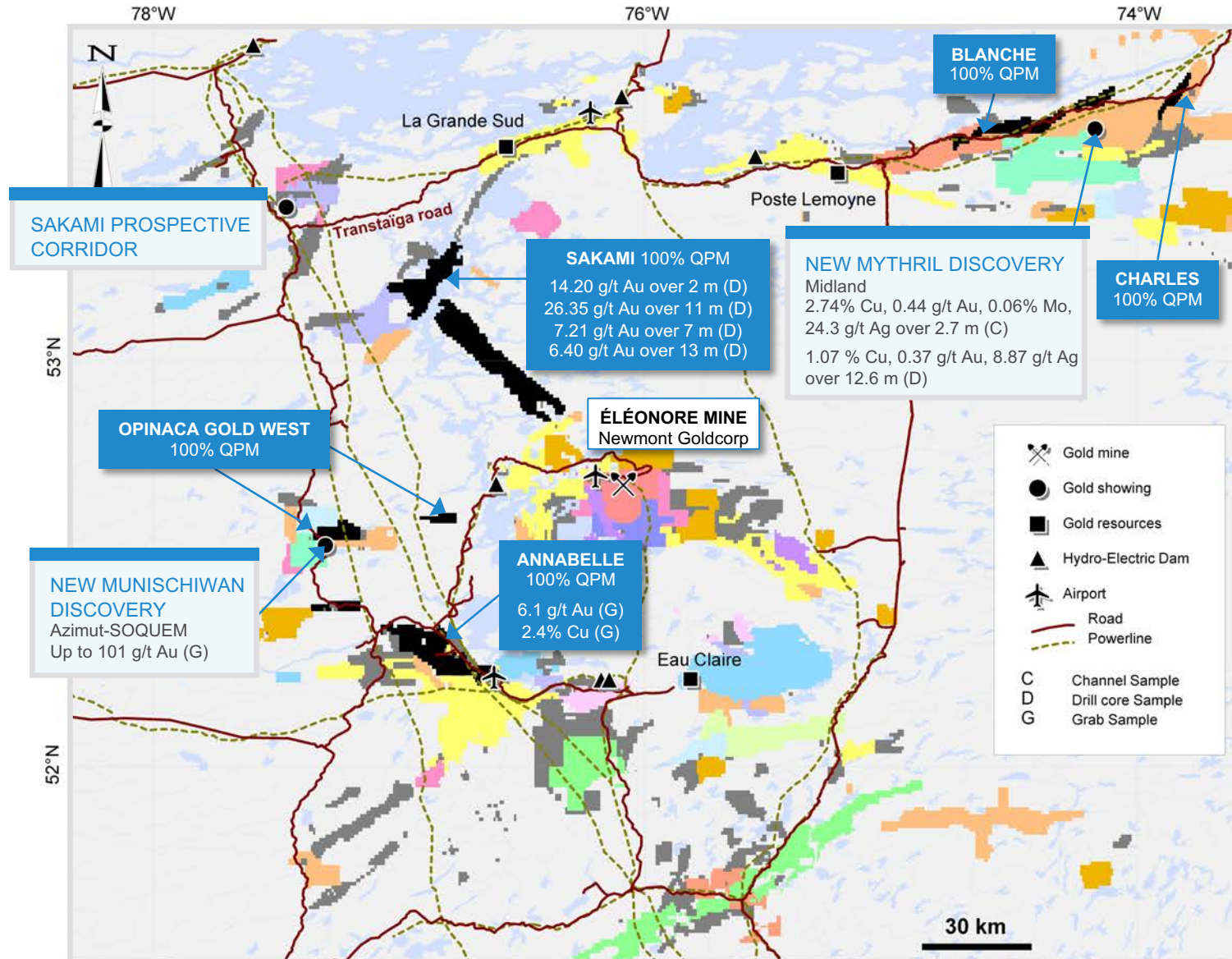


LEGEND

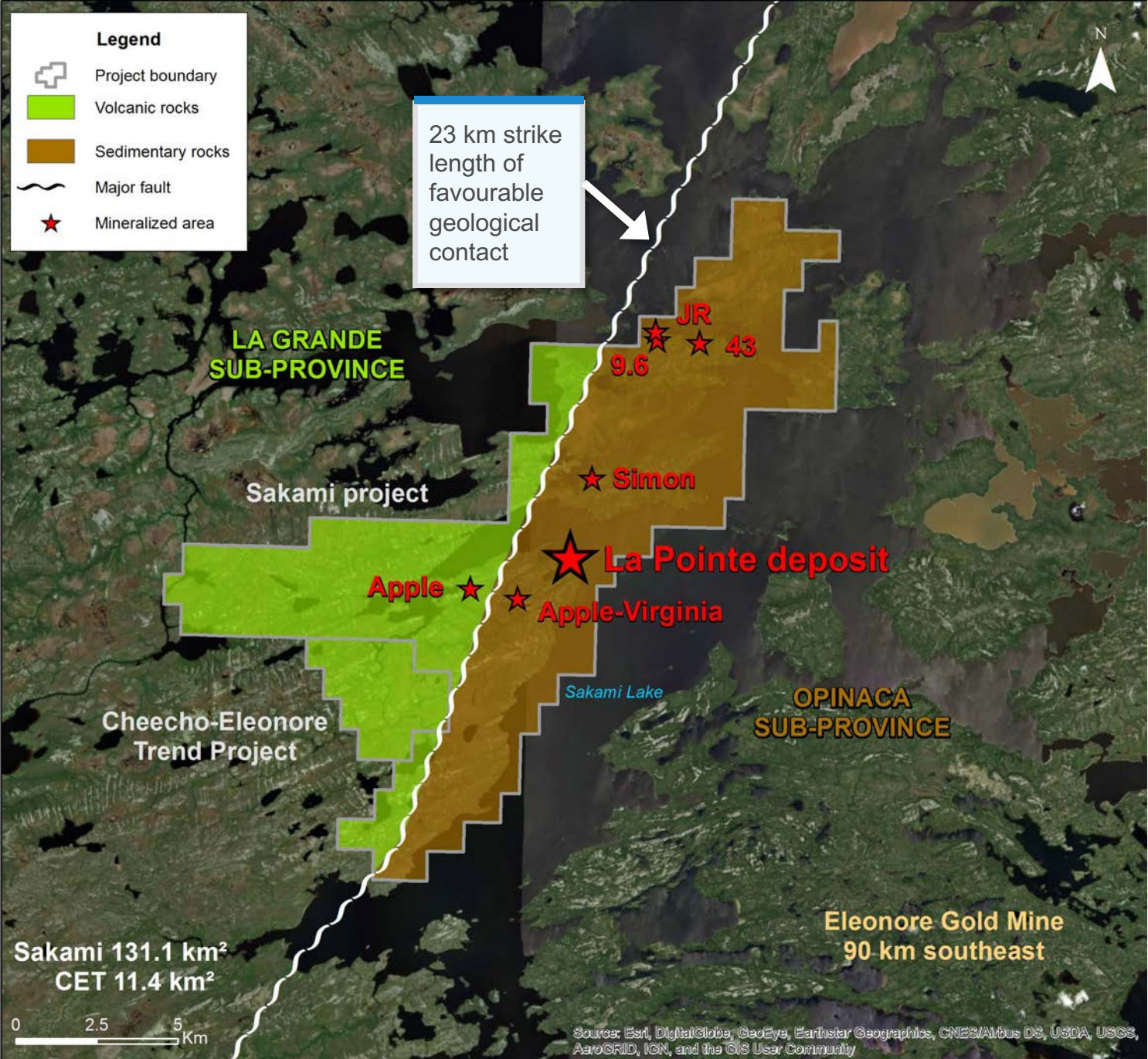
Main roads	Mines
Lakes	Volcanic rocks
City or village	Sedimentary rocks
Mineral resources and exploration project	Major fault

Company Projects

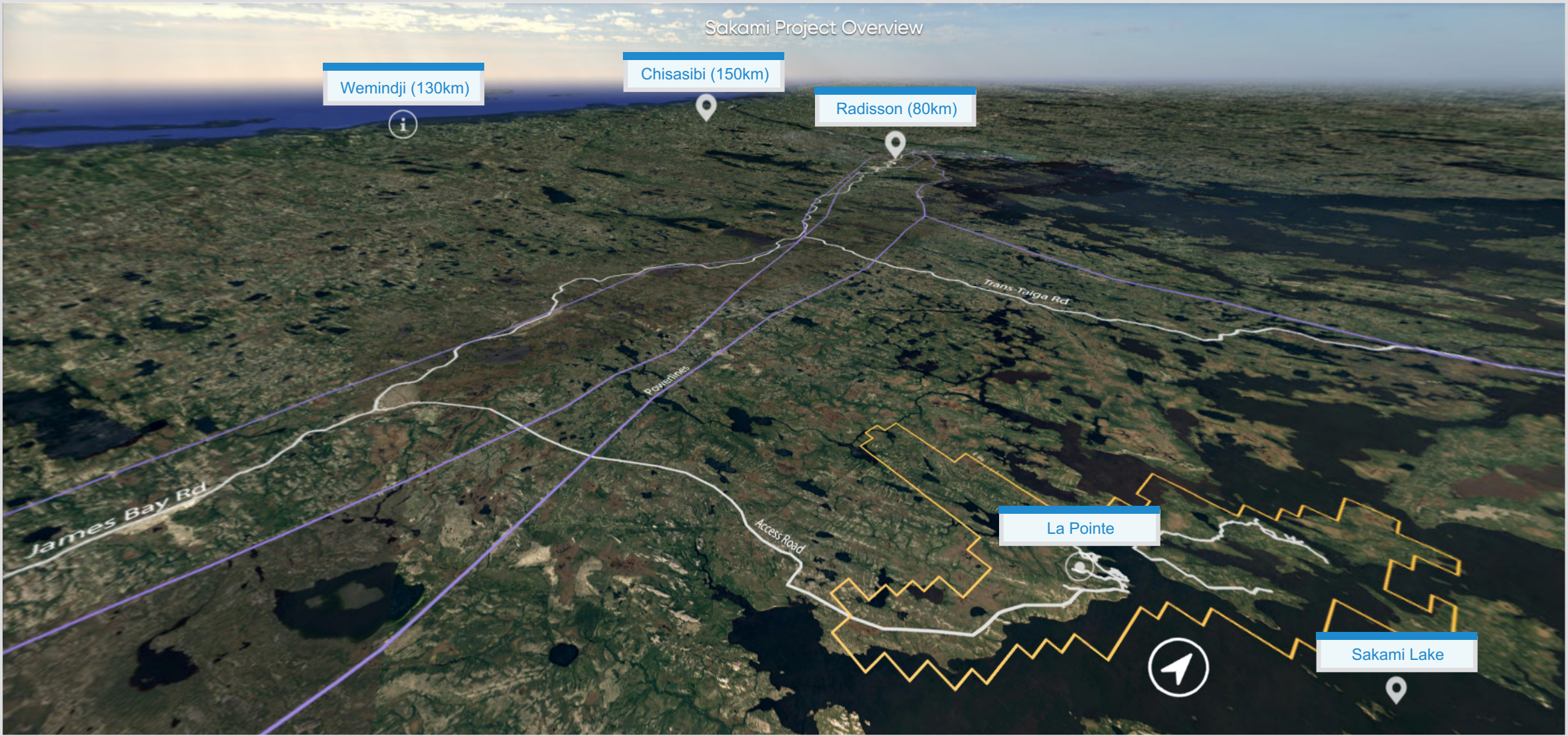
- Osisko (2,104 km²)
- Midland (1,661 km²)
- Azimut (901 km²)
- Quebec Precious Metals Corp. (874 km²)
- Corporation Éléments Critiques (789 km²)
- Eastmain (743 km²)
- Azimut / Soquem (507 km²)
- Lithium MetalsTech (330 km²)
- Sirios (328 km²)
- Harfang (308 km²)
- Kenorland (270 km²)
- Azimut / Goldcorp (249 km²)
- Dios (196 km²)
- Opinaca (Goldcorp) (193 km²)
- Azimut / Eastmain / Opinaca (147 km²)
- Beaufield (144 km²)
- Others



Sakami Project



Sakami Project



Sakami Project

- ▷ **YEAR ROUND ACCESS** for drilling with 2 drills on-site and 3 camps
- ▷ Underexplored area hosting the **ÉLÉONORE GOLD MINE** along strike
- ▷ **100% QPM, BEFORE: 50-50% JV**
- ▷ **LA POINTE DEPOSIT:**
 - **100** diamond drill holes intercepted the deposit
 - **32,940** m drilled to date
 - Drilling over 900 m length, down-plunge from surface to 600 m, open in all directions
 - Significant gold grades between 20 to 50 m drilling width, highlights:
- ▷ Many gold occurrences identified over **10-KM STRIKE LENGTH**
- ▷ 23 km along the contact between sediments and the volcanics between **LA GRANDE AND OPINACA** geological sub-provinces

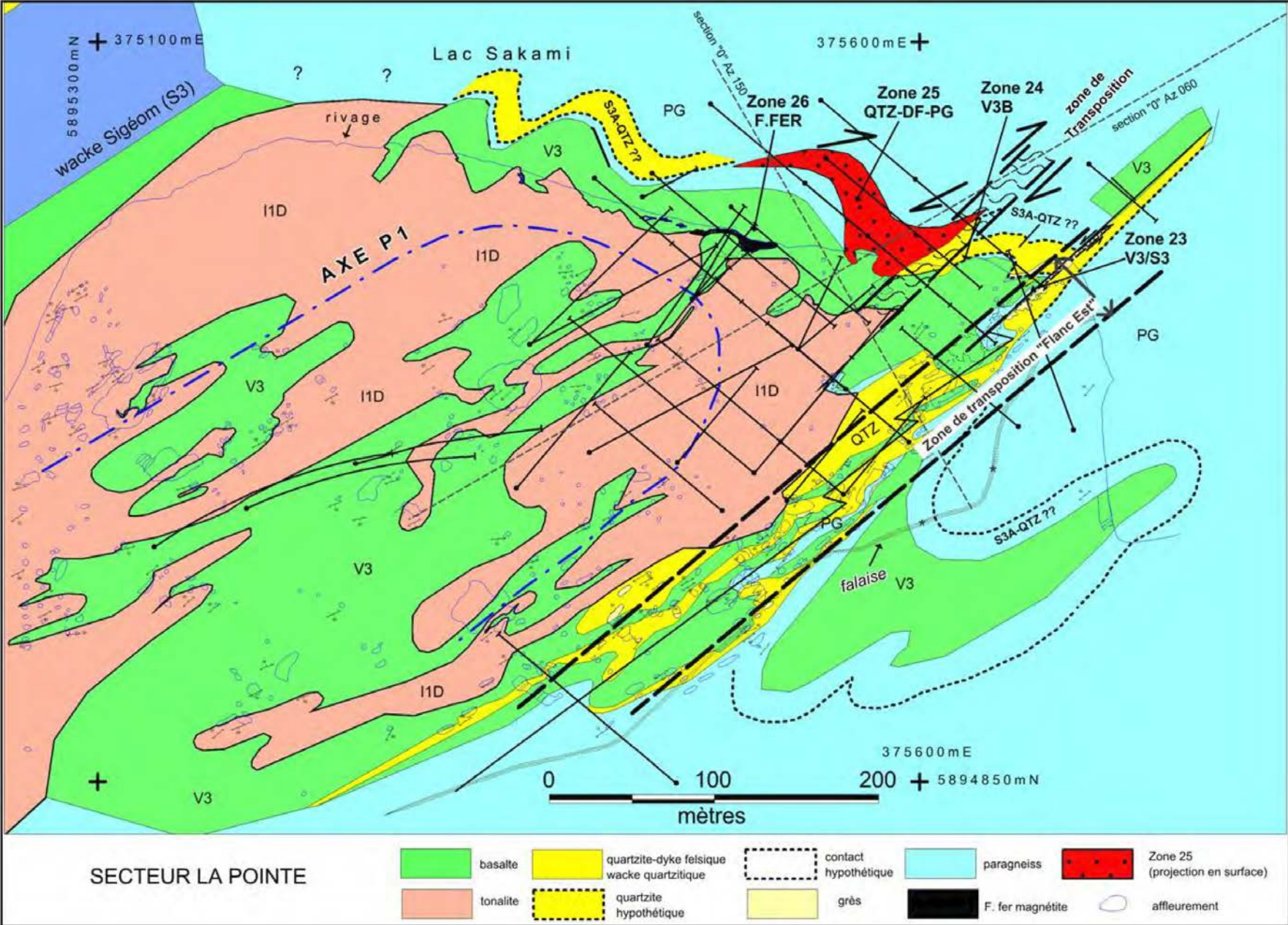
Pre-2018 Drill Results

4.94 g/t Au over 21 m incl. 6.35 g/t Au over 11 m
4.01 g/t Au over 23 m incl. 7.21 g/t Au over 7 m
4.16 g/t Au over 21 m incl. 6.40 g/t Au over 13 m
2.51 g/t Au over 48 m incl. 6.93 g/t Au over 12 m

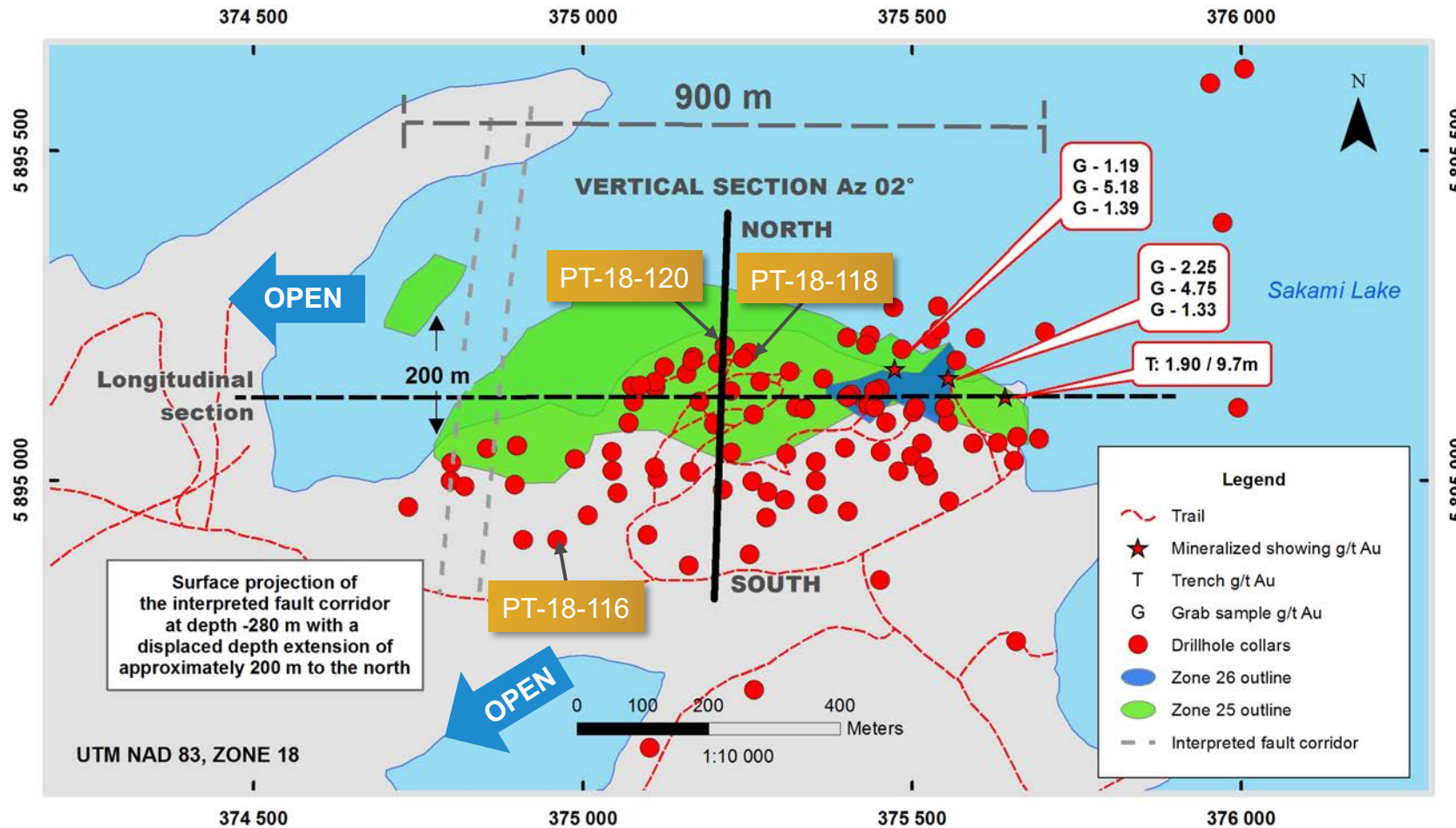
2018-2019 Drill Results

3.89 g/t Au over 14.9 m incl. 4.26 g/t Au over 11.9 m
3.22 g/t Au over 31.5 m incl. 5.11 g/t Au over 15.0 m
3.59 g/t Au over 27.0 m incl. 5.06 g/t Au over 15.0 m

Sakami Project - La Pointe Deposit - Geology



Sakami Project - La Pointe Deposit - Plan View



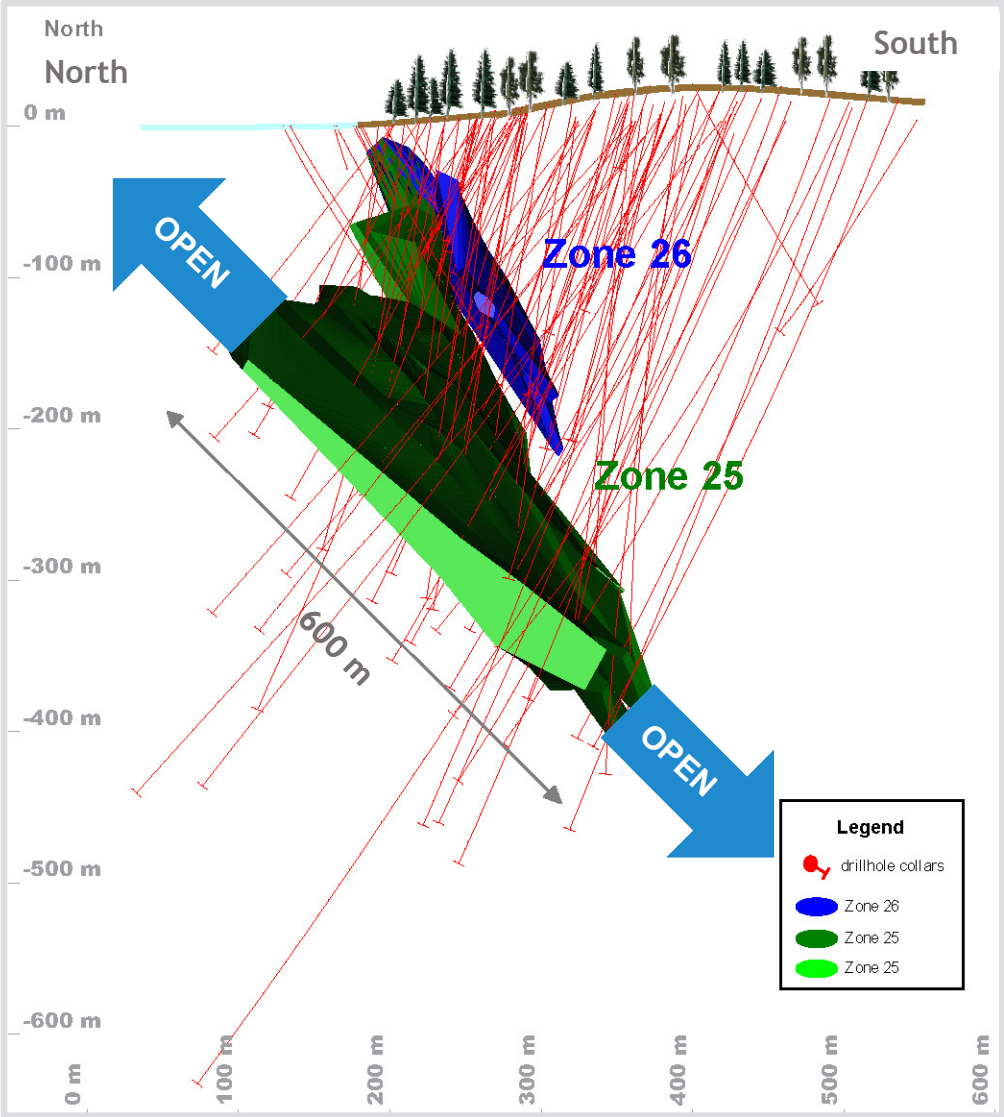
2018 DRILL RESULTS

PT-18-116: 3.89 g/t Au over 14.9 m including 4.26 g/t Au over 11.9 m

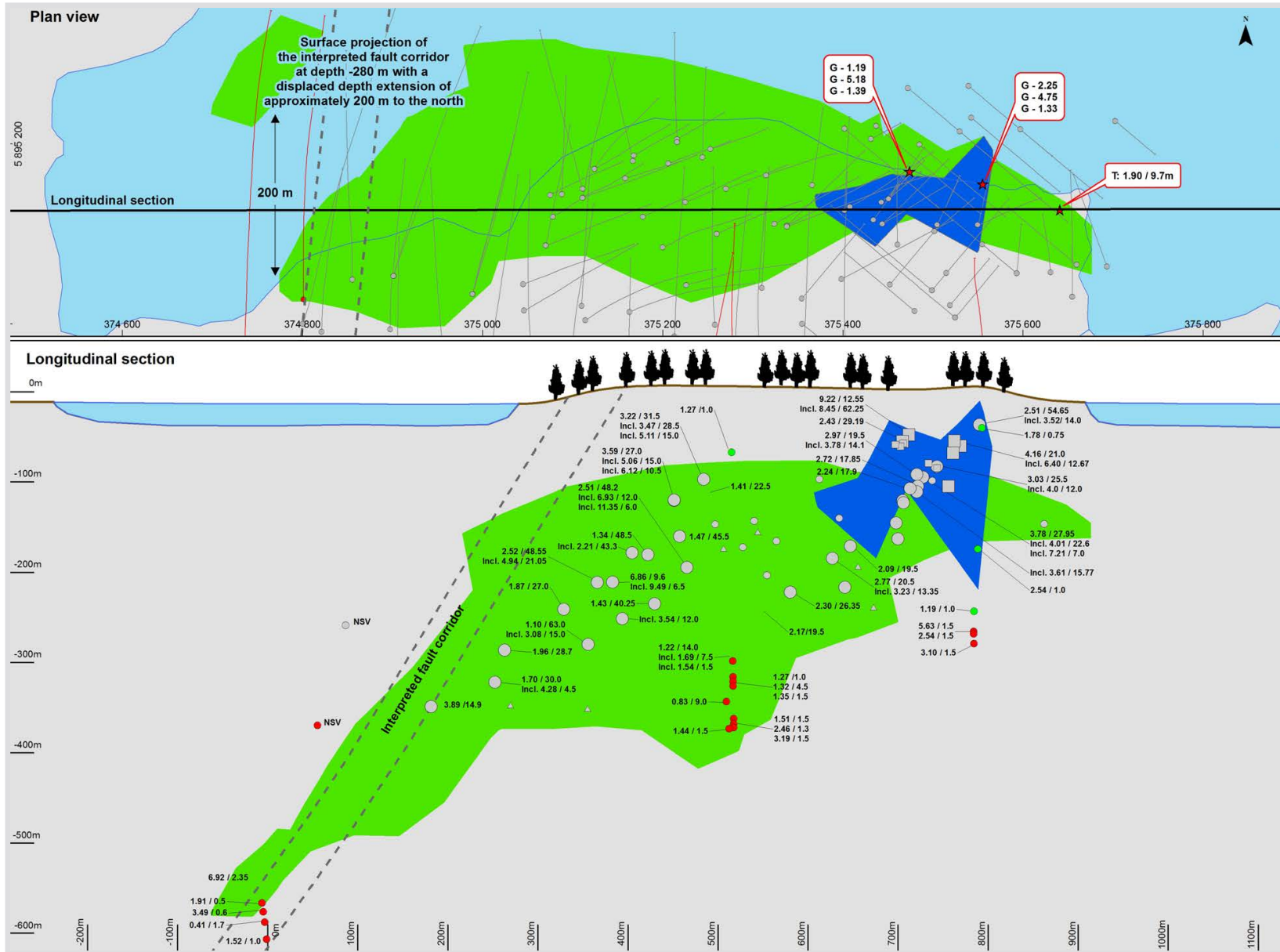
PT-18-118: 3.22 g/t Au over 31.5 m including 5.11 g/t Au over 15.0 m

PT-18-120: 3.59 g/t Au over 27.0 m including 5.06 g/t Au over 15.0 m

Sakami Project - La Pointe Deposit - Vertical Section

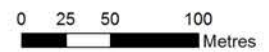


Sakami Project - La Pointe Deposit - Longitudinal Section



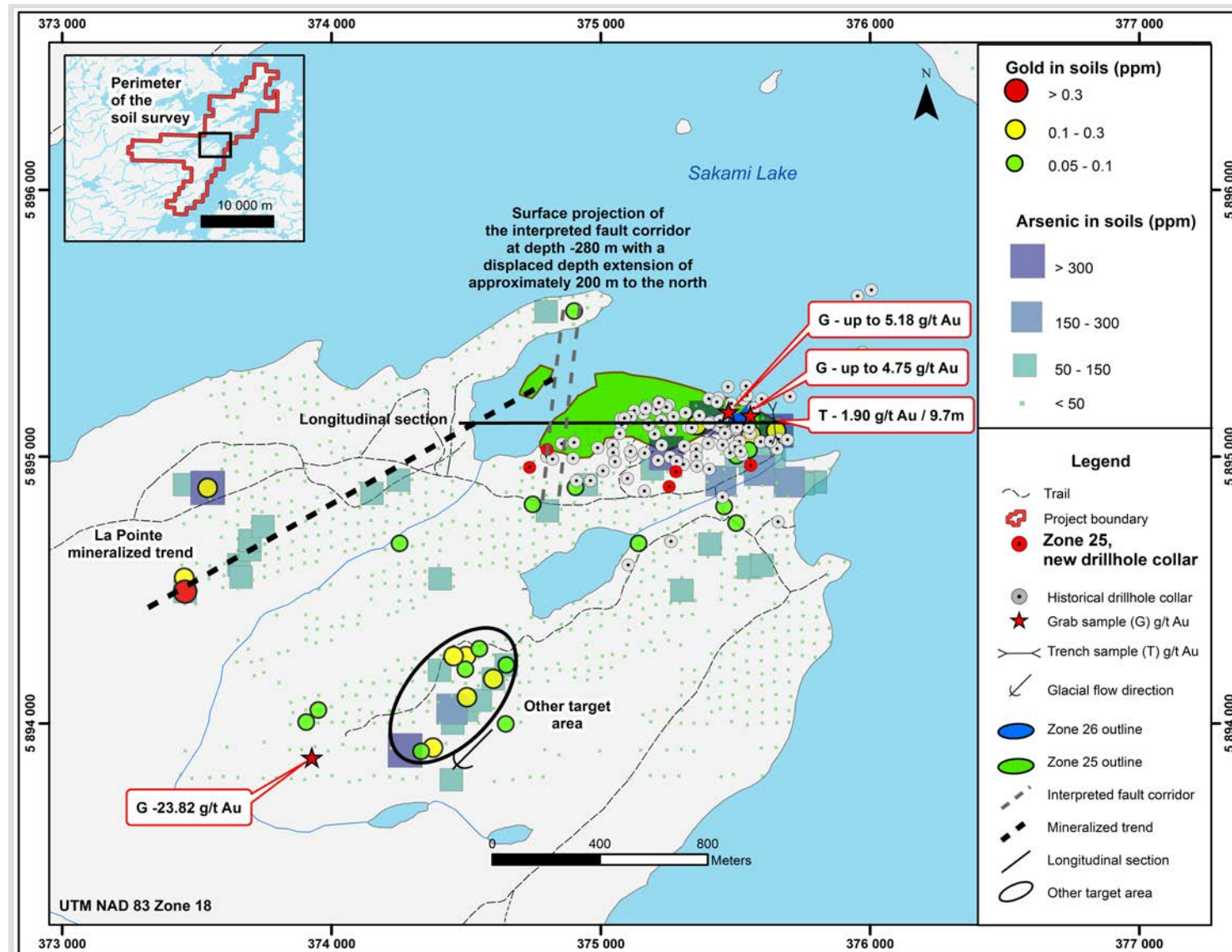
Legend

- 3.22 / 31.5 (g/t Au / metres)
Incl. 3.47 / 28.5 (Includes g/t Au / metres)
- **Zone 25, new drillhole intercept and surface trace**
- Zone to be interpreted, 2019 drillholes
- ▲ Zone 22, historical drillholes
- Zone 25, historical drillholes
- Zone 26, historical drillholes
- Ratio > 40 (g/t Au x down-hole width)
with grade and width indicated
- Ratio > 10 < 40 (g/t Au x down-hole width)
- Ratio < 10 (g/t Au x down-hole width)
- Zone 26 outline
- Zone 25 outline
- ★ Mineralized showing g/t Au
- T Trench g/t Au
- G Grab sample g/t Au
- NSV No significant value
- Sakami Lake shoreline
- - - Interpreted fault corridor

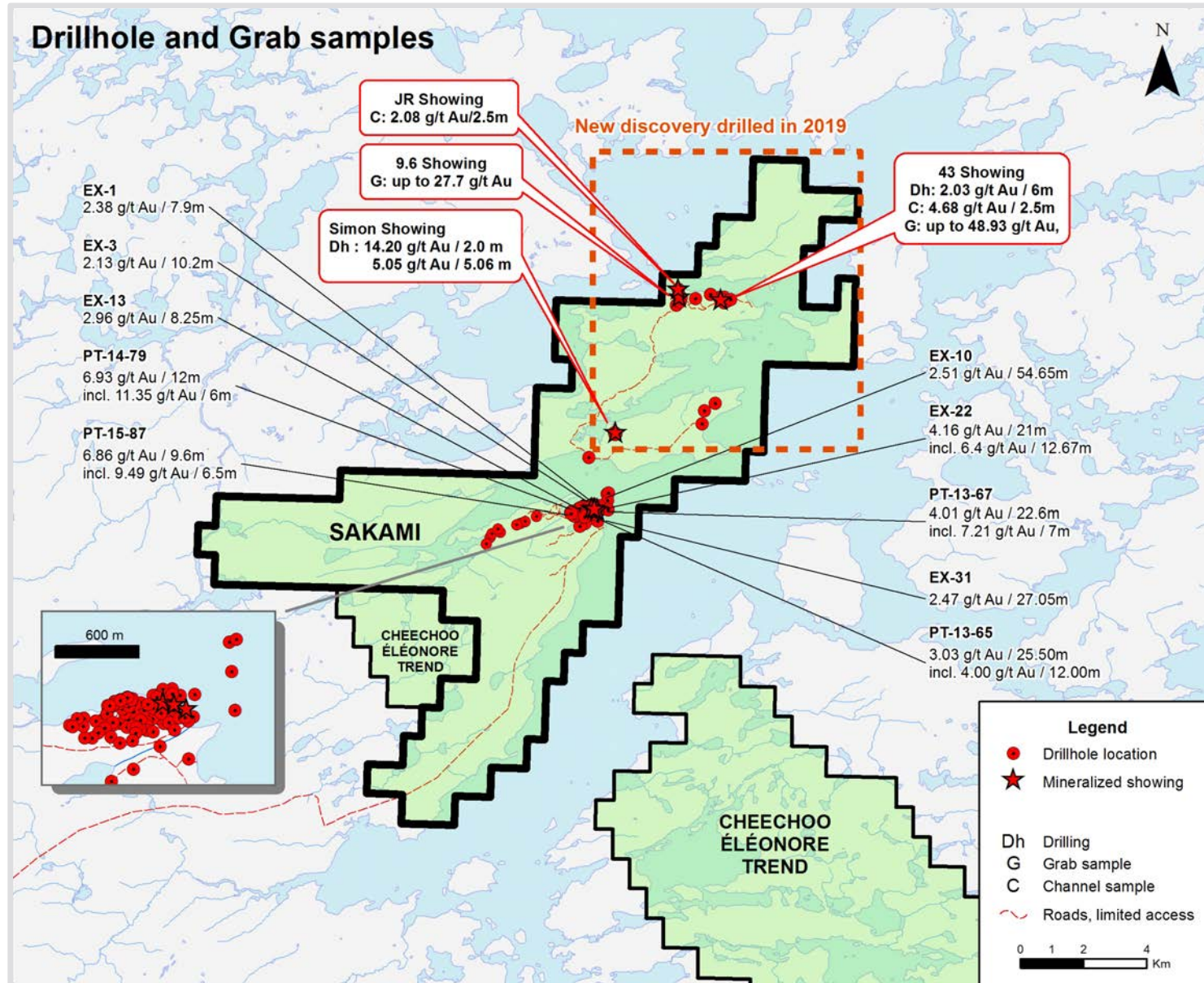


UTM NAD 83 Zone 18

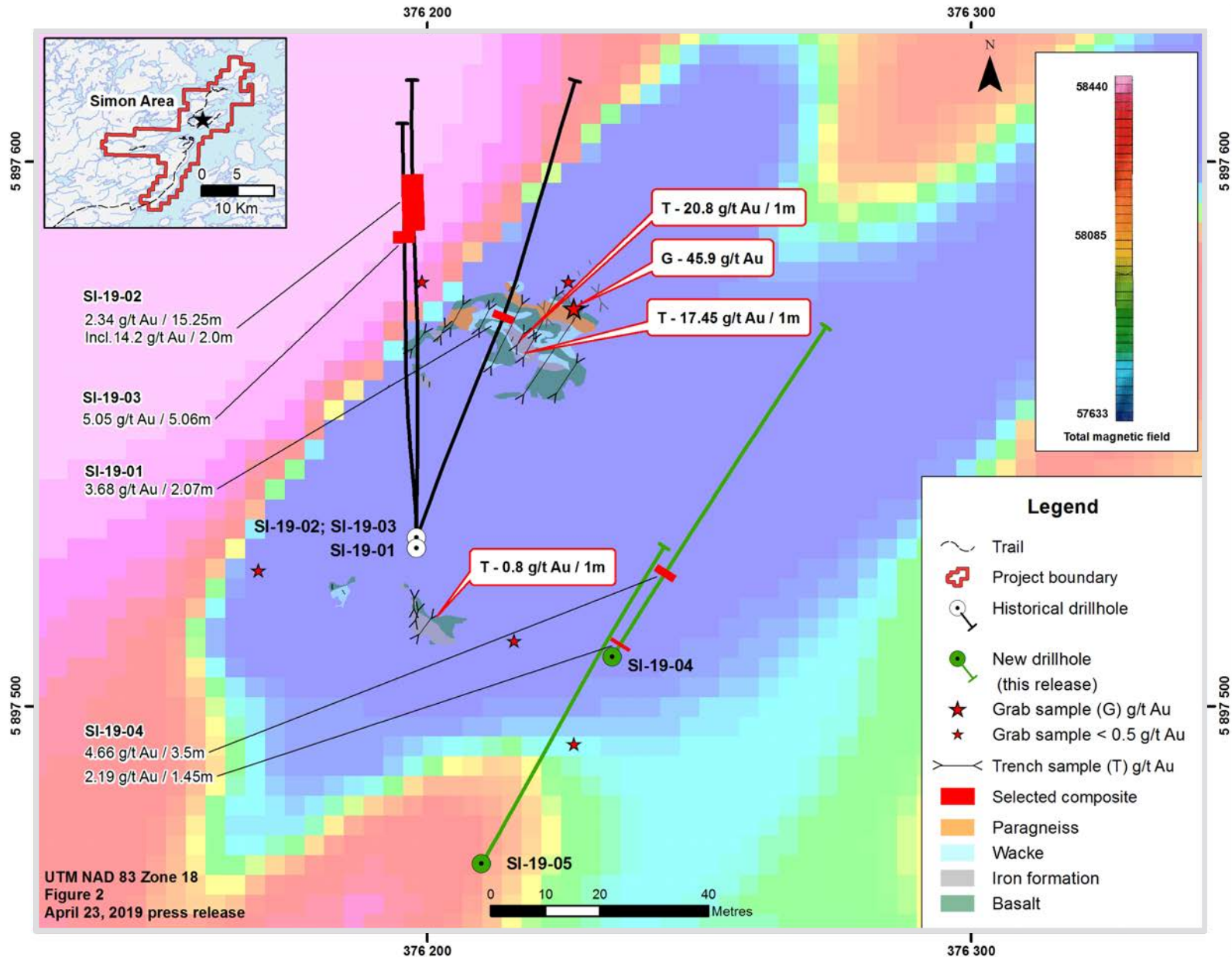
Sakami Project - Gold Soil Anomaly Trend



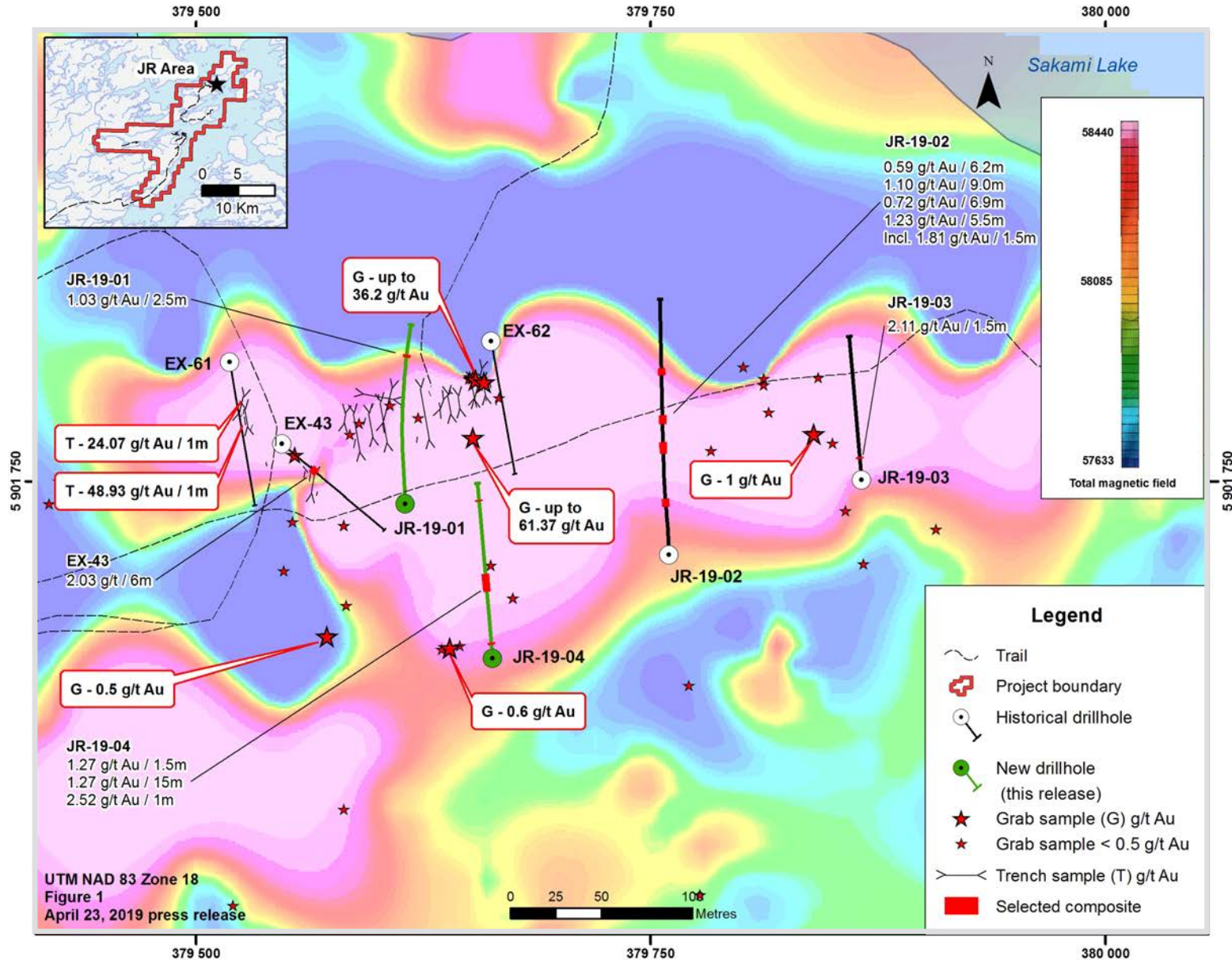
Sakami Project – Simon & JR discoveries – up to 8 km NE of La Pointe deposit



Sakami Project – Simon discovery, 3 km NE of La Pointe



Sakami Project – JR discovery, 8 km NE of La Pointe



Why Invest in QPM?

- ✓ **TIMELY EXPLORATION AND DRILL RESULTS** news flow from flagship Sakami project aimed at rapidly advancing to the mineral resource estimate stage
- ✓ **SIGNIFICANT POTENTIAL FOR ADDITIONAL DISCOVERIES** on large land package located around Newmont Goldcorp's Éléonore mine
- ✓ **STRATEGIC INVESTOR, NEWMONT GOLDCORP CORPORATION**, is part of the solid shareholder base including *Caisse de dépôt et placement du Québec*
- ✓ Proven successes by **MANAGEMENT TEAM AND BOARD**
- ✓ **\$ 1.5 M IN CASH**, with the ability to raise capital



QPM Discovery Cycle

QPM is following the same the discovery cycle as Quebec's two most recent successful gold discovery stories: Virginia and Osisko

VIRGINIA GOLD MINES INC.



Virginia founded in 1986

OSISKO EXPLORATION LTD.



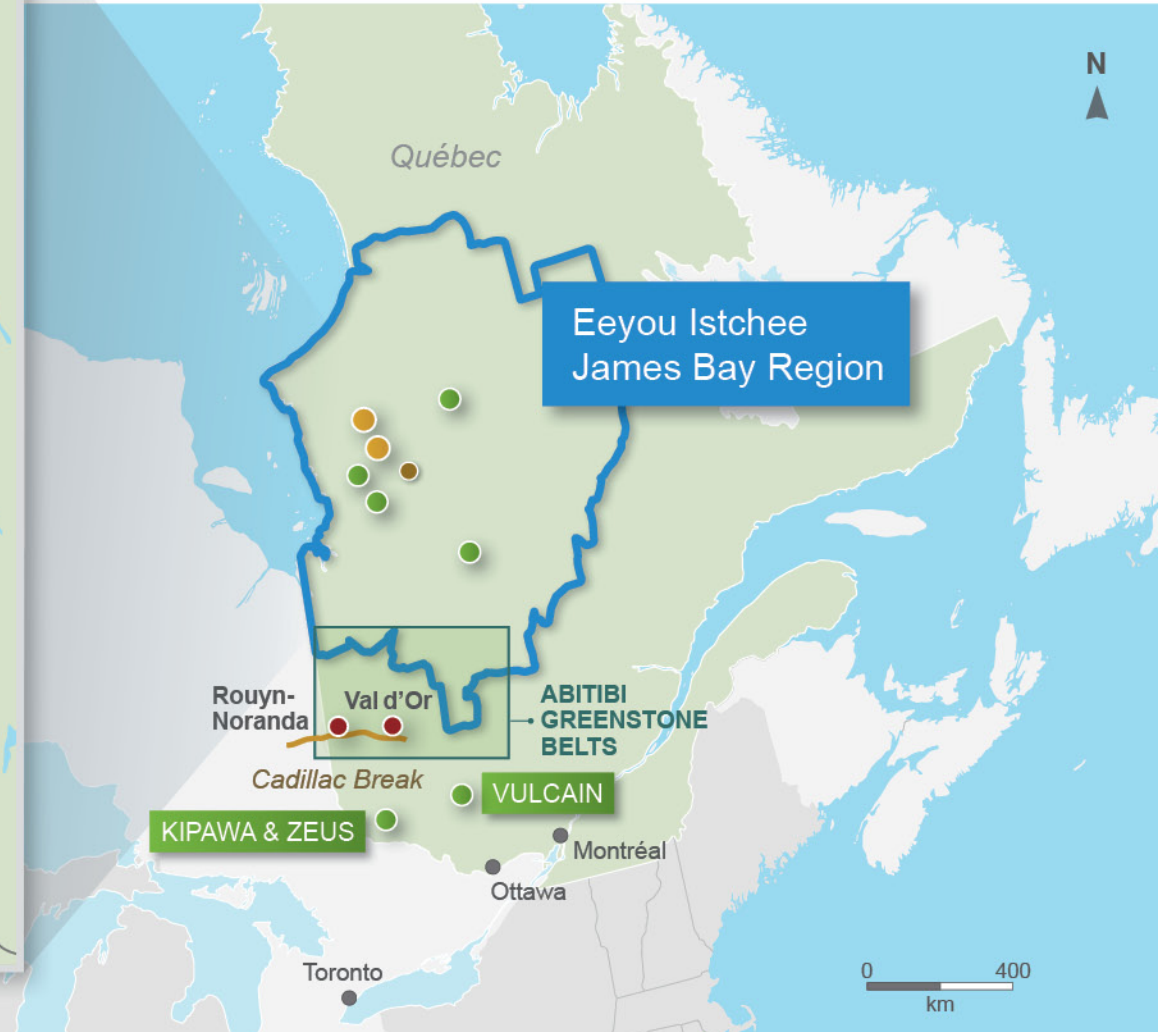
Osisko founded in 1995



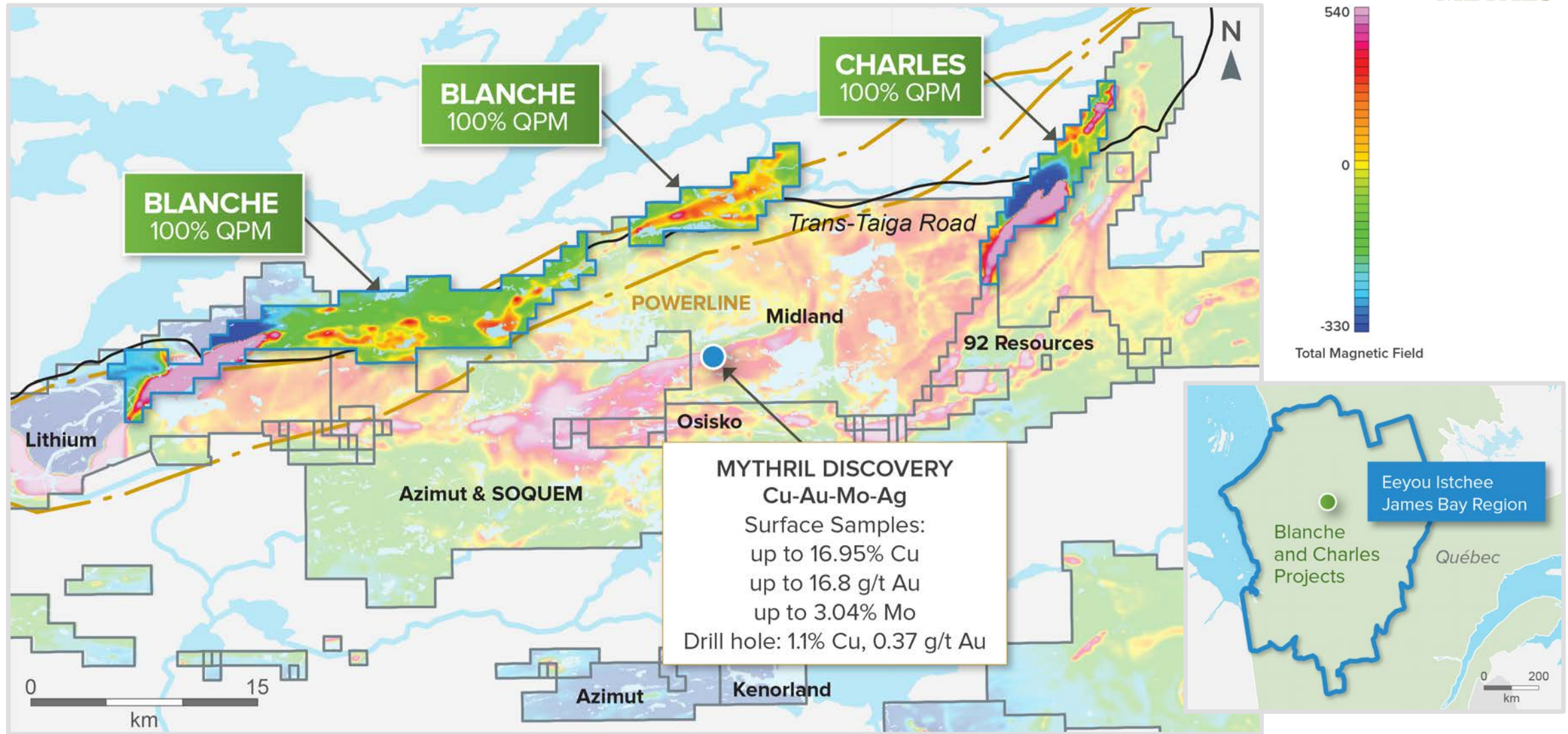
QUEBEC PRECIOUS METALS
CORPORATION

ADDENDUM - NON-CORE ASSETS

James Bay Region



Blanche and Charles 100% Owned



Blanche and Charles 100% Owned, cont'd

Location and Access Québec, Canada

120 to 150 km northeast of the Éléonore gold mine, Eeyou Istchee James Bay Territory of Québec.

Blanche – James Bay Road to km 544, then east on Trans-Taïga Road (230 km) – NTS 33/G9 and 33/G10.

Charles – 15 km east of the Blanche project, along the Trans-Taïga Road – NTS 33/H12.

Surface Area

Total of 162 km² – 100% owned with no royalties.

- Blanche 256 claims – 131 km²
- Charles 61 claims – 31 km²

Summary

The geological setting (greenstone belt) appears to be favourable for the discovery of base metals and gold. The projects are located within 7 km to the north where Midland Exploration Inc. has discovered a significant copper-gold mineralized zone on its Mythril project.

BHP Billiton Canada Inc. has recently made an investment of \$5.9 M in Midland to fund drilling of the Mythril discovery.

Work to Date

Blanche

Prospecting and selected grab sampling completed in 2017. A total of 221 samples were collected and values up to 0.31% copper were measured.

Charles

Compilation of historical exploration work. Linear magnetic highs identified.

Exploration Targets and Planned Program

Base metals and gold targets. Field reconnaissance work will be carried out during the upcoming summer field season to further validate the exploration potential of both projects. Sell interest in the projects or identify partner to pursue exploration.

Annabelle 100% Owned



Annabelle 100% Owned, cont'd

Location and Access Quebec, Canada

60 km southwest of the **Éléonore mine** and close to the mine's road, Eeyou Istchee James Bay Territory of Québec.

Accessible at km 396 of the paved James Bay Road and 27 km along the Sarcelle Road – NTS 33/C2 and 33/C6 and 33/C7.

The nearest community is Radisson at km 523 of the James Bay Road.

Surface Area

Total of 186 km² – 353 claims, 100% owned with no royalties.

Summary

The project covers sequences of volcano-sedimentary rocks and intrusions **favourable for the discovery of base metals and gold.**

Approximately 25 km northwest of the Annabelle project, Azimut Exploration Inc. and SOQUEM have discovered a significant gold mineralization zone on their Munischiwan project.

The project is located approximately 60 km east of where Eastmain Resources Inc.'s Eau Claire project has **Measured and Indicated Resources of 4.3 Mt at 6.2 g/t Au, and Inferred Resources of 2.4 Mt at 6.5 g/t Au.**

Work to Date

Prospecting and selected grab sampling were completed in 2017. **A total of 274 samples were collected and values up to 6.1 g/t Au and 2.4% Cu were measured.**

Exploration Targets and Planned Program

Gold and base metals targets. Field reconnaissance work will be carried out during the upcoming summer field season to further validate the exploration potential of the project.

Opinaca Gold West 100% Owned



Opinaca Gold West 100% owned, cont'd

Location and Access Québec, Canada

40 to 80 km west of the **Éléonore mine**, Eeyou Istchee James Bay Territory of Québec.

Western portion of the project is accessible through km 434 of the paved James Bay Road – NTS 33/C10 and 33/C11.

The nearest community is Radisson at km 523 of the James Bay Road.

Surface Area

Total of 74 km² – 141 claims, 100% owned with a 2% Net Smelter Royalty.

Summary

The project covers prospective sequences of volcano-sedimentary rocks striking generally east-west and along the same mineralized trend as the **Éléonore mine**.

Gold and arsenic geochemical anomalies have been identified.

Opinaca Gold West is adjacent to the Azimut Exploration Inc. and SOQUEM's discovery of a **significant gold mineralization zone** on their Munischiwan project.

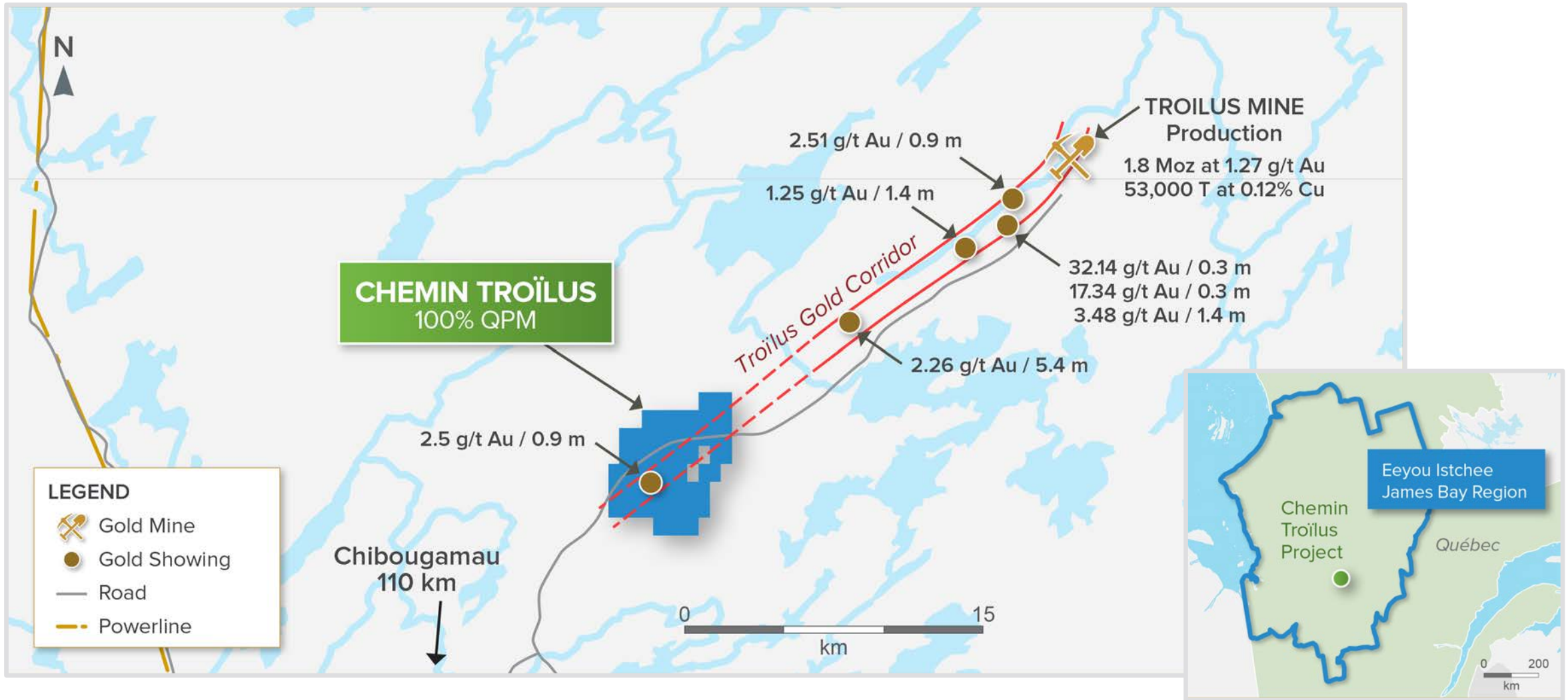
Work to Date

Historical work has been compiled and areas with **strong gold exploration potential** have been identified.

Exploration Targets and Planned Program

Gold targets are similar to those of the **Éléonore mine**. Field reconnaissance work will be carried out during the upcoming summer field season to **further validate the exploration potential of the project**. Sell interest in the project or identify partner to pursue exploration.

Chemin Troilus 100% Owned



Chemin Troilus 100% Owned, cont'd

Location and Access Québec, Canada

110 km north-northeast of the town of Chibougamau with good road access.

Surface Area

Total of 33 km² – 61 claims, 100% owned with 2% Net Smelter Royalty of which 1.5% can be bought back by the Corporation for \$2 million.

Summary

Located in the gold-copper Troilus Gold Corridor, at the northern limit of the Frotet-Troilus greenstone belt.

The corridor contains the Troilus mine (25 km northeast) which produced more than 2 Moz of gold and 70,000 tonnes of copper. Current Indicated resources of 3.9 Moz gold equivalent and Inferred resources of 1.2 Moz gold equivalent.

Work to Date

Acquired following prospecting discovery of numerous mineralized boulders carrying gold values from 0.3 to 1.57 g/t Au the Troilus Gold Corridor.

Prospecting in 2017 returned gold values of 5.6 g/t, 5.2 g/t and 0.33 g/t.

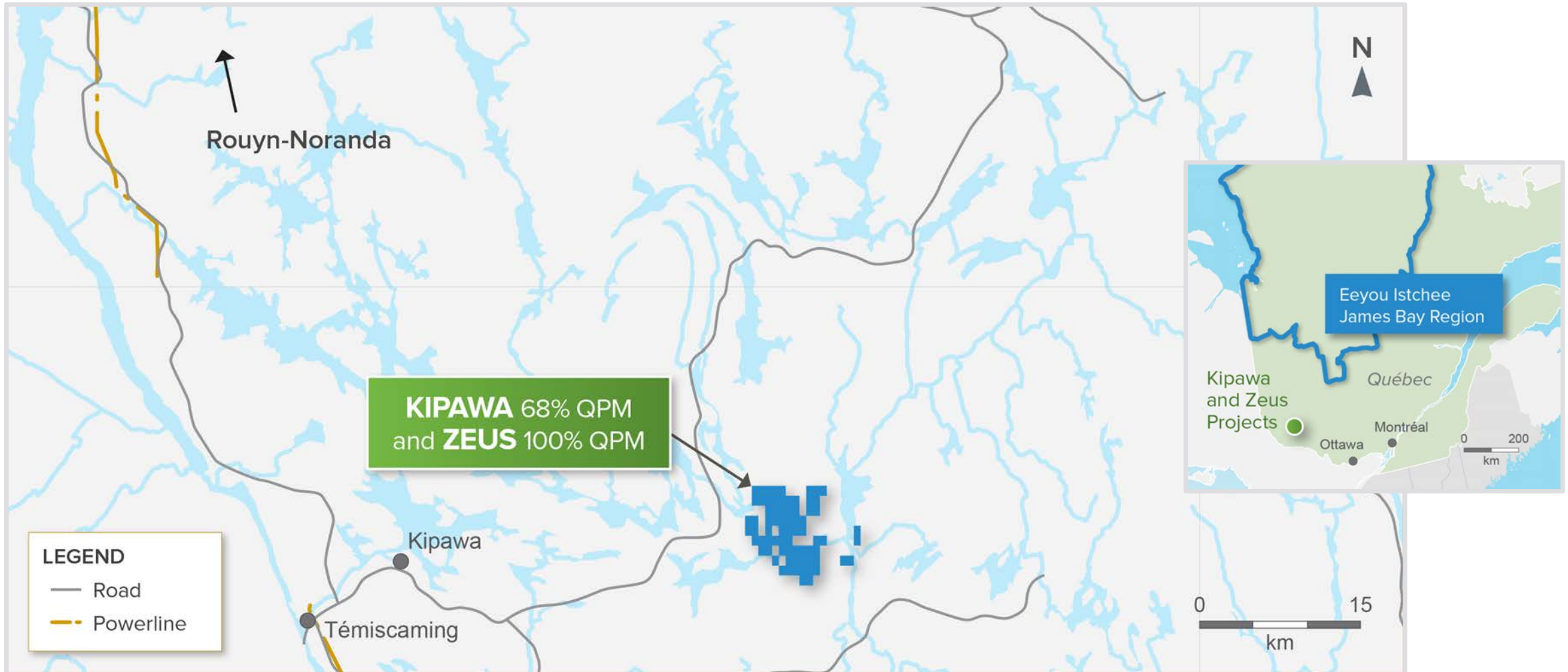
Reconnaissance drilling under the till cover in 2017 intersected rocks similar to the boulders. Best value was 2.5 g/t Au over 0.9 metres.

Exploration Targets and Planned Program

A recommended program of additional till sampling, surface geophysics and drilling totalling \$0.6 M has been recommended. Sell interest in the projects or identify partner to pursue exploration.

Kipawa 68% Owned (32% Investissement Québec)

Zeus 100% Owned



Kipawa 68% Owned (32% Investissement Québec)

Zeus 100% Owned, cont'd

Location and Access Québec, Canada

50 km east of Temiscaming in southwestern Québec, 90 km northeast of North Bay, Ontario, and 140 km south of Rouyn-Noranda – NTS 31K15.

Surface Area

Total of 36 km² – 73 claims, (43 km²), 68% owned with no royalties.

- ▷ Kipawa 22 claims – 13 km²
- ▷ Zeus 51 claims – 30 km²

Summary

The projects lie in the Grenville geological province, approximately 55 km south of the geological contact with the Superior geological province. The lithologies consist mainly of gneiss with a grade of metamorphism ranging from the greenschist facies to the amphibolite-granulite facies.

Twelve heavy rare earth showings have been identified on the Zeus project, some of which contain niobium and tantalum.

The Kipawa deposit is defined by three enriched horizons within the “Syenite Complex”, which contains some light rare earth oxides but primarily heavy rare earth oxides. Drilling since 2011 totals 293 drill holes (24,571 m) and was used to prepare a feasibility study which was completed in 2013. The study presented a production schedule for 15 years, excluding a two-year pre-production period to remove the overburden, level the top of an open pit, and build a process plant and related infrastructure. There is potential for the addition of future resources, which could increase this life span.

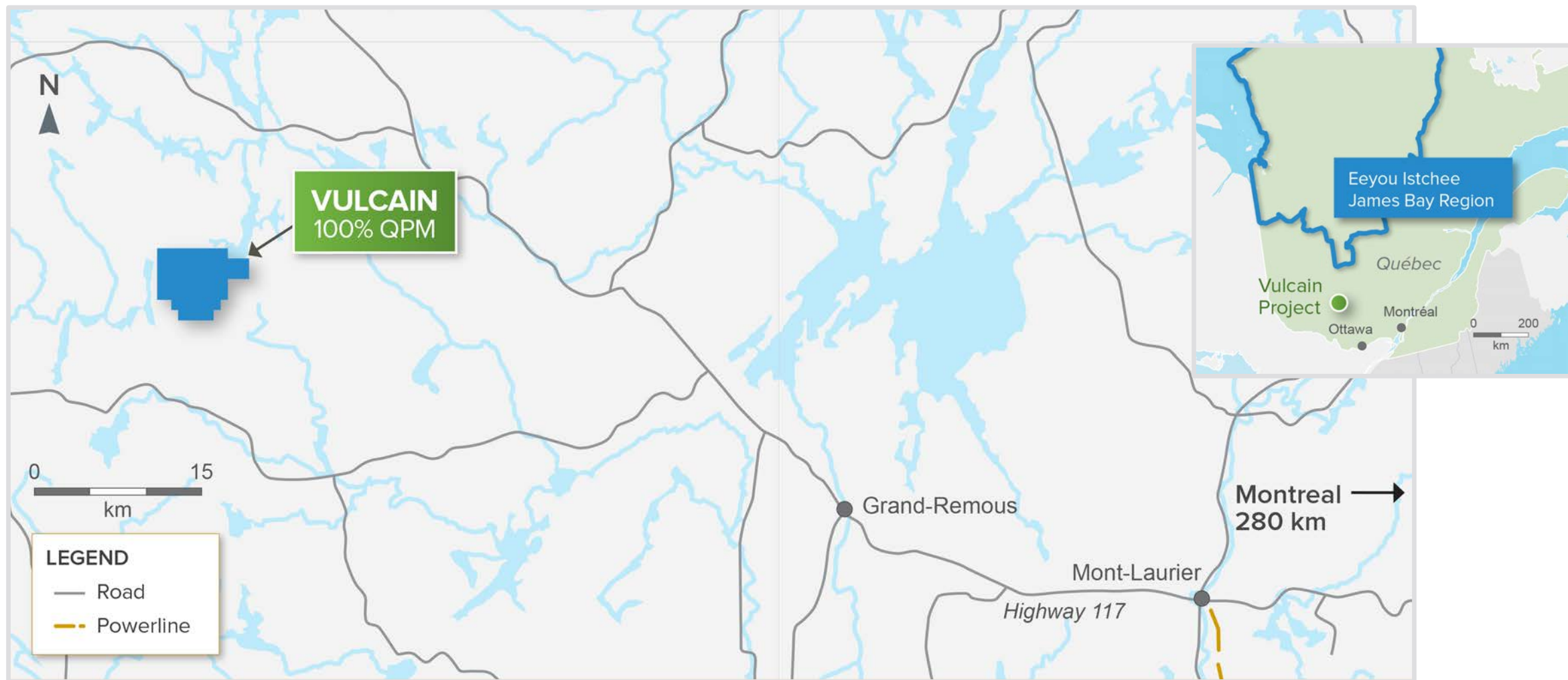
In 2014, Matamec Explorations Inc. (“Matamec”, now the Company) and Toyotsu Rare Earth Canada Inc. (“TRECAn”) signed a termination agreement for the Kipawa project, pursuant to which Matamec paid TRECAn \$280,000 and TRECAn converted its undivided 49% interest in the project into a 10% interest on net profits from future production.

In 2017 development activities were stopped for the project as well as research activities with various university partners and government agencies.

Exploration Targets and Planned Program

Find one or more third parties to participate in the project.

Vulcain 100% Owned



Vulcain 100% Owned, cont'd

Location and Access Québec, Canada

Located in Haute-Gatineau, 165 km southeast of Val d'Or and 280 km northwest of Montréal – NTS 31K15.

Accessible by provincial paved highway 117 and by a 45 km gravel road linking the project at the Lac Arthur exit.

Near the southwestern edge of the La Vérendrye wildlife reserve.

Surface Area

Total of 40 km² – 68 claims, 100% owned.

Summary

Nickel-copper showings hosted by ultramafic sills which vary in width from 10 to 300 m are up to 3 km long.

The project contains the former Renzy Lake mine with production of approximately 718,000 tonnes grading 0.70% nickel and 0.72% copper from 1969 to 1974.

Independent NI 43-101 compliant estimate: Indicated resources of 0.092 million tonnes at 0.65% nickel and 0.63% copper, and Indicated resources of 0.51 million tonnes at 0.75% nickel and 0.64 % copper, using a 0.5% nickel equivalent cut-off grade.

Québec's Ministère de l'Énergie et des Ressources Naturelles will carry out rehabilitation work in 2019 on the area of the old mining operation.

Work to Date

No recent work performed.

Exploration Targets and Planned Program

\$1 M exploration program is recommended to identify additional resources in and around the mine area.

Sell interest in the project or identify a partner to pursue exploration.



QUEBEC PRECIOUS METALS
CORPORATION

Normand Champigny

Chief Executive Officer

T: 514-979-4746

E: nchampigny@qpmcorp.ca

Jean-François Meilleur

President

T: 514-951-2730

E: jfmeilleur@qpmcorp.ca

1080, Côte du Beaver Hall, Suite 2101, Montreal, Quebec H2Z 1S8

www.qpmcorp.ca