

## SHAREHOLDER INFORMATION

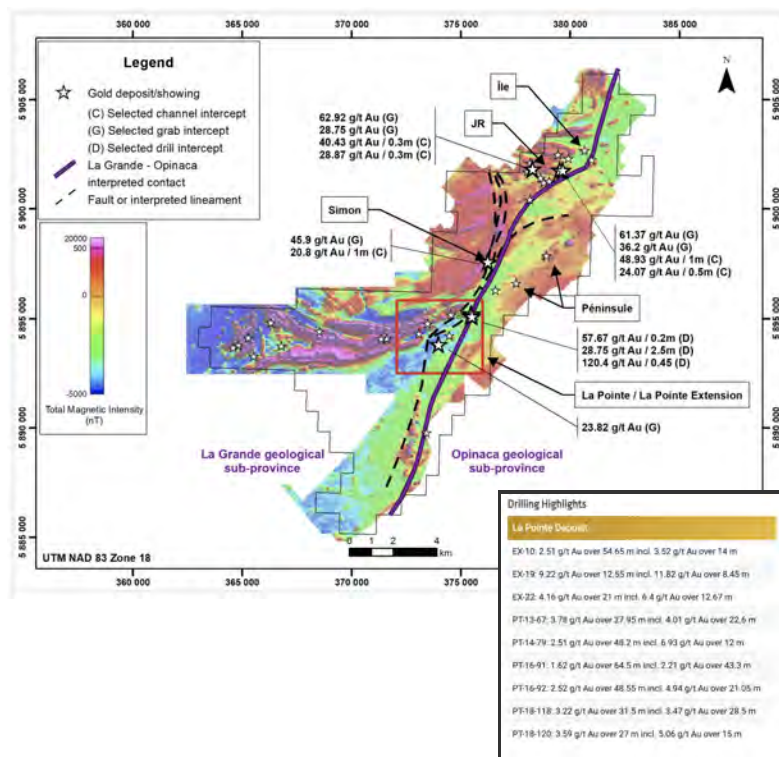
Shares issued and outstanding 94.7 M  
Market capitalization \$4.7 million  
Closing Price \$0.05  
(February 28, 2024)

## SIGNIFICANT KEY SHAREHOLDERS

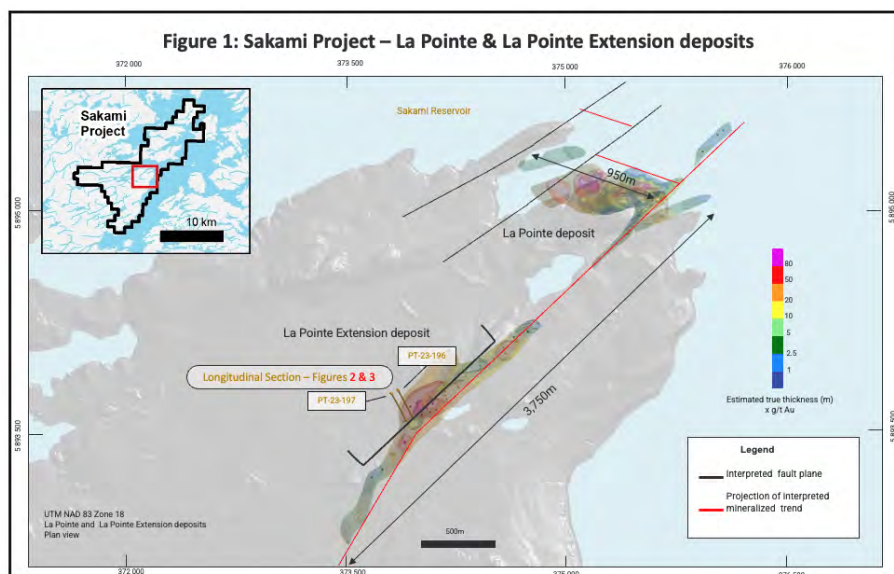
Quebec institutions 15%  
Management & insiders including 16%  
Newmont Corporation

## SAKAMI PROJECT: STRONG POTENTIAL TO FIND MINERALIZED ZONES THAT WILL INCREASE THE PROJECT SIZE

- Project located in the underexplored James Bay gold mining camp where the Eléonore gold mine is operated by Newmont Corporation, the world's largest gold mining company.
- District-scale land package hosting a highly prospective 23 km long contact between the La Grande and the Opinaca geological sub-provinces with multi-million ounce potential.
- Significant grades and well-defined drill-ready targets, 91 to 95 % gold recoveries.
- Located near the major La Grande hydroelectric power generation complex and year-round access to carry out exploration.



## La Pointe Area

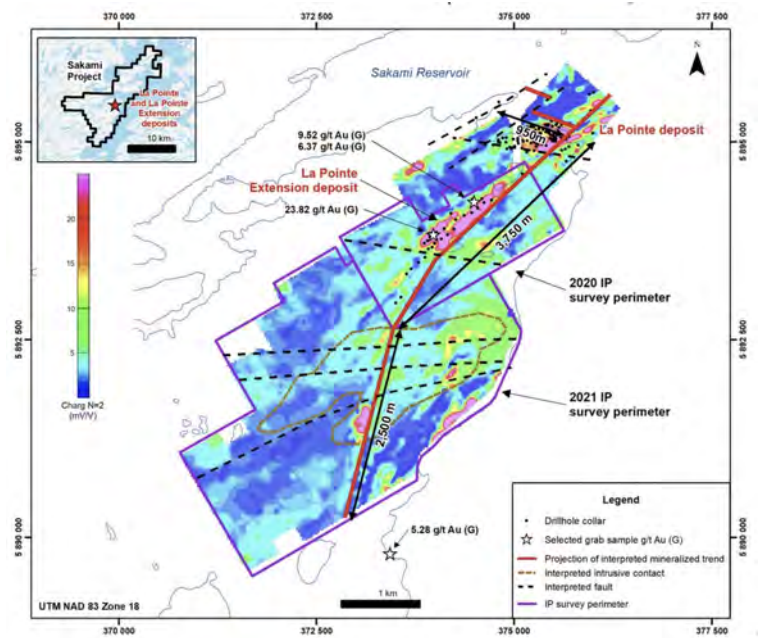


- 134 diamond drill holes** intercepted the deposit on **36,747 m** of drilling at **La Pointe** & **51 holes** intercepted on **15,557 m** at the **La Pointe Extension** deposit.
- Average thickness of mineralization of 40 m, and up to 100 m thick.
- Deposit defined over 900 m on strike and 600 m down-plunge at **La Pointe**.
- 1,800 m on strike and 600 m down-plunge at **La Pointe Extension**.

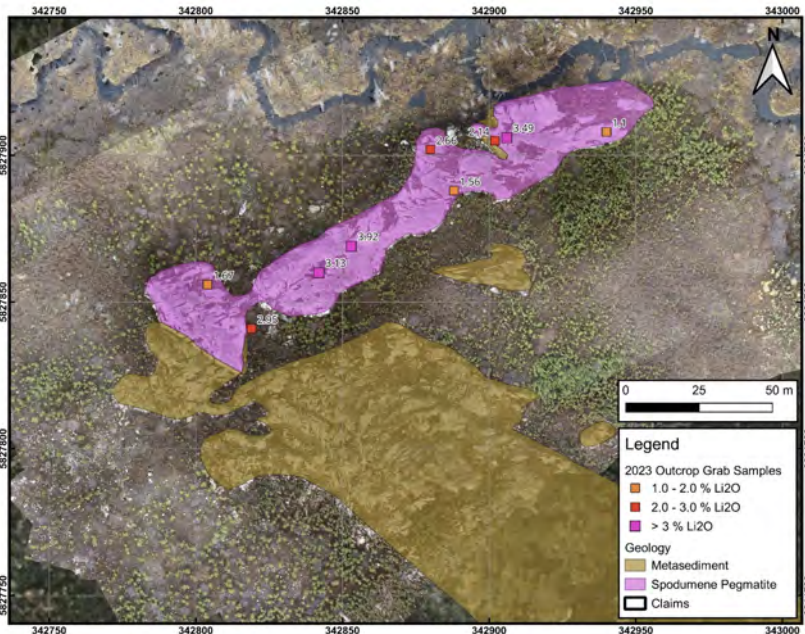


## Drill Target

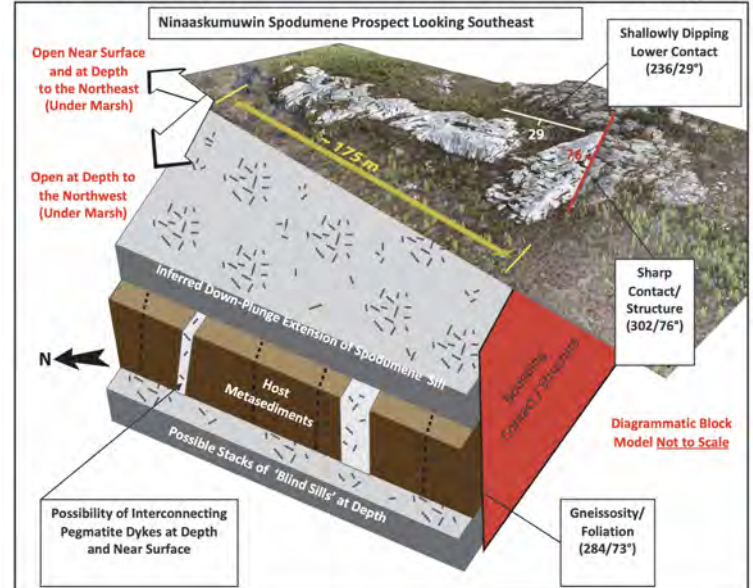
- Interpreted 2.5 km-long mineralized intrusive along gold-bearing trend.
- Strong coincident IP and soil anomalies.
- 2023 drilling to test targets with potential for multi-million ounce deposit.



## Lithium Potential –James Bay



## Elmer East project – Ninaaskumuwin lithium showing



## Ninaaskumuwin spodumene discovery

- About 1 km from Billy Diamond paved highway.
- Shallowly dipping sill at the surface: Length 175 m, width 42 m, ~5m estimated thickness.
- Contains 15-20%, 3-55 cm long spodumene crystals grading up to 3.92%  $\text{Li}_2\text{O}$ .
- **Drilling-ready** to validate discovery to test the down-dip extent of the sill, and the presence of **potential stacked sills**.
- Based on assays and PXRF data, surface mineralization has the potential to extend along a NW-SE 3.8 km-long trend

Normand Champigny, Ing., Chief Executive Officer and Qualified Persons under NI 43-101 on standards of disclosure for mineral projects, has prepared, verified and approved the data and technical content of this document.